



morton.

Annandale 2/233A Johnston Street

 3  2  1

Discover a harmonious blend of crisp, contemporary interiors and captivating vistas of the Harbour Bridge and city skyline. This stand-out, tri-level residence, offers a seamless fusion of elegance, charm and practicality. Nestled within the architecturally claimed, "Portobello" complex, this opportunity redefines suburban living.

- A convenient ground floor position with easy level street access
- Light-filled open plan design enjoying an elevated easterly aspect
- All three levels have access to external spaces
- Opulent master suite with walk-in robe and ensuite, bathtub
- Two further large bedrooms all with built-in robes
- A wide dining balcony that captures full city panoramas
- Oak timber flooring, ducted air-conditioning and intercom entry
- Quality modern kitchen equipped with gas cooking and dishwasher
- Secure lock-up basement garage

morton.com.au

Auction

Tuesday, 02 Jul 2024, 6:00 pm

View

As advertised or by appointment

Agents

Ian Qiu

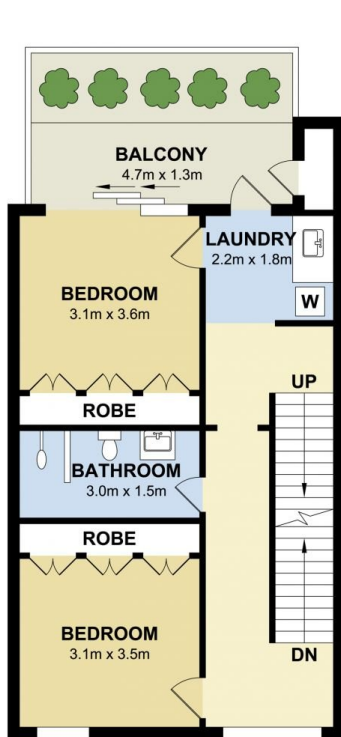
 0447 696 425

 ian@morton.com.au

Naomie Texier

 0439 247 710

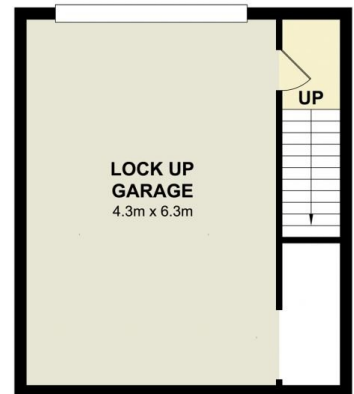
 naomie@morton.com.au



Lower Level



Entry Level



Upper Level

2/233A Johnston Street, Annandale

Measurements are approximate. Not to scale. Illustrative purposes only
Open2view does not take any responsibility for any information supplied