



morton.

Wentworth Point 429/25 Bennelong Road

 1  1  1

Located in Positano at The Waterfront, here is your opportunity to move into this spacious one bedroom split level apartment. A short stroll from The Promenade and The Piazza, local restaurants, convenience store, pharmacy, public transport off Hill Road and ferry service to Parramatta and City CBD. The Waterfront is located moments to Sydney Olympic Park main venues and train station, Bicentennial Park and Millennium Parklands.

This apartment is located on level 4, features:

- Split system air conditioning
- Kitchen with plenty of cupboard space
- Stainless steel appliances including microwave, dishwasher and gas cooking
- Light and bright with natural ventilation flowing into spacious combined living and dining area
- Generous size under covered balcony with water views
- Good size bedroom with built-in wardrobe
- Laundry room with clothes dryer
- Security undercover car space

morton.com.au


View

As advertised or by appointment

Agents

Zarin Hossain

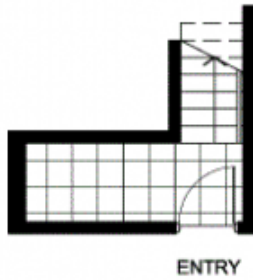
 0418 328 479

 zarin.hossain@morton.com.au

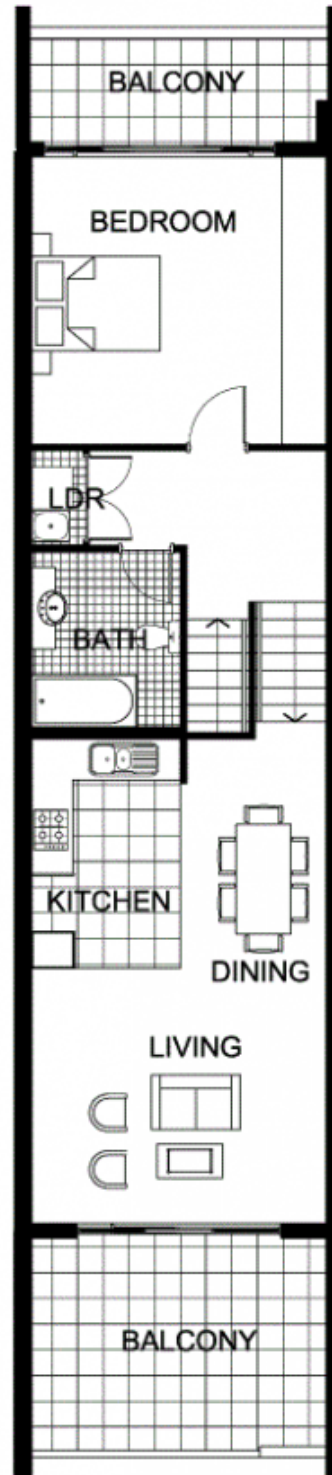
Nevena Tsahtarlis

 0428 835 910

 nevena@morton.com.au



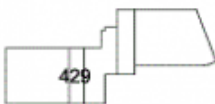
LEVEL 4.5



LEVEL 5



"The information contained herein is intended as an introduction to the general content of the project and is subject to variation. Interested parties should rely on their own enquiries and the contract for sale. The developer reserves the right to vary from these descriptions as it deems necessary or as any relevant authority may require."



1 BEDROOM

APARTMENT 429(Exist No.504)

INTERNAL AREA 73sqm

OUTDOOR AREA 19sqm

TOTAL AREA 92sqm



LEVEL 5

POSITANO

