



morton.

Guildford 1/462-464 Guildford Road

 3  2  1

Combining the size and layout of a house with the ease of apartment living, this supremely spacious single-level residence offers a stylish home with an expansive outdoor area for relaxing or entertaining. This apartment is conveniently located within walking distance from Guildford train station, St Patricks Primary School, Guildford Public School & within minutes from main arterial roads connecting you to greater Sydney CBD.

- Two balconies perfect for entertaining
- Recently installed floorboards in bedrooms & tiled living room
- Gourmet kitchen with plenty of storage, island bench, stone benchtops and gas kitchen
- Family size bathroom with separate bathtub and shower
- Internal laundry
- Split system air conditioning
- Security intercom
- Large lock up basement garage
- Generous floorplan total size approx. 152m²

morton.com.au

View

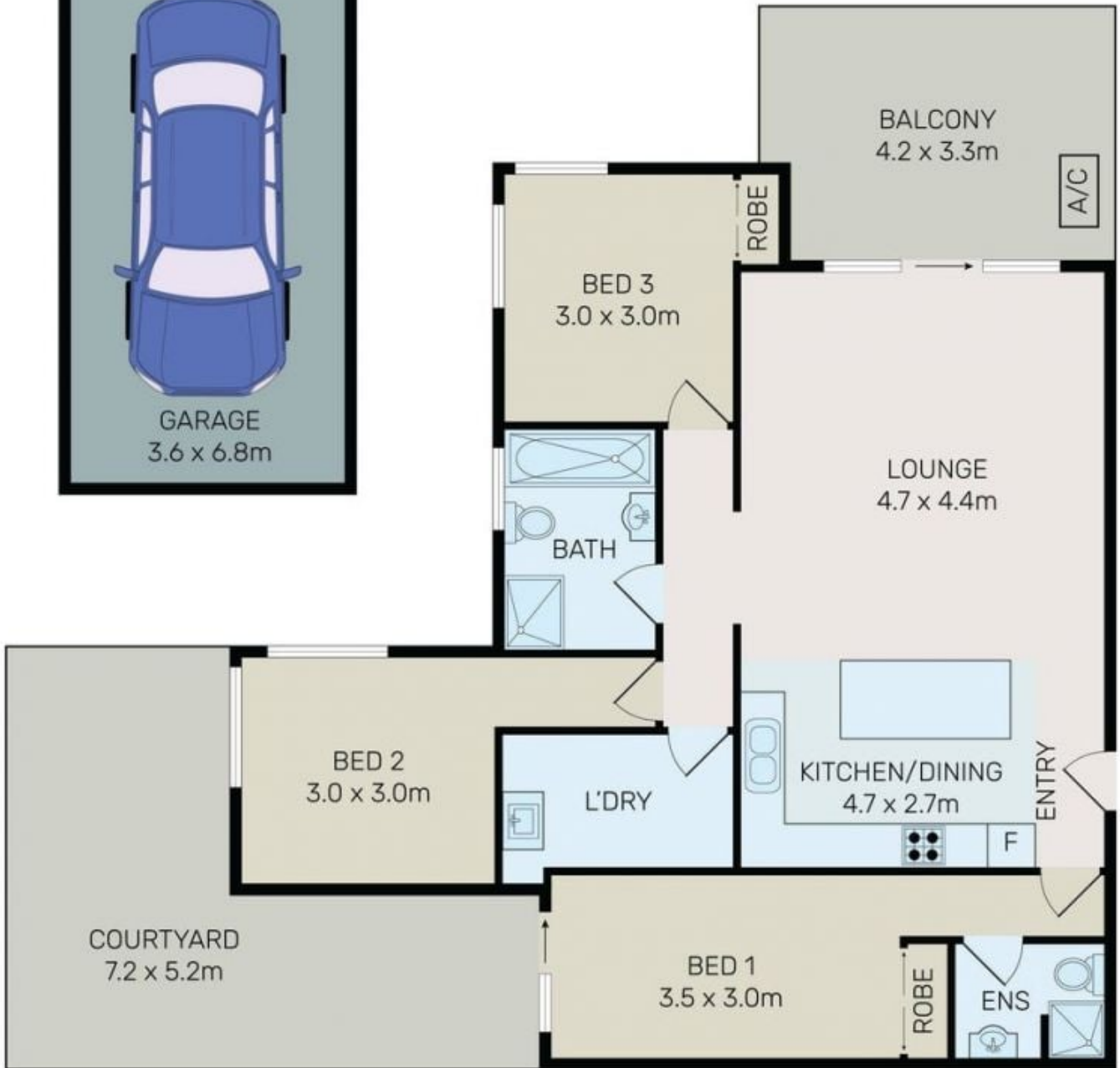
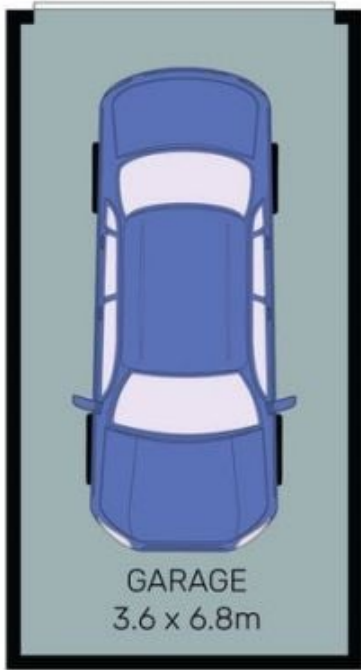
As advertised or by appointment

Agent

Nevena Tsahtarlis

 0428 835 910

 nevena@morton.com.au



All information contained herein is gathered from all sources we believe to be reliable. However we cannot guarantee its accuracy and interested parties should rely on their own enquiries.



1/462-464 Guildford Road, Guildford