



morton.

Pyrmont A802/24-26 Point Street

 2  2  2

A refined offering unmatched in outlook, position and palatial indoor/outdoor living, this residence awards a lifestyle of single level luxury that's simply breathtaking. Immersed in a spectacular panorama over Sydney's iconic skyline that transforms into a dazzling kaleidoscope of colour by night. With a stunning interplay of natural light and flowing space featuring a perfectly positioned north east corner embraced by wrap around exterior terraces.


- Designed for effortless in/outdoor entertaining
- Views framed through floor to ceiling glass
- Open plan living, seamless level access to terrace
- Miele gas kitchen, ample bench and cupboard space
- Double bedrooms, master w/ built-ins and ensuite
- Side by side secure parking adjacent to lift, storage
- Ducted air conditioning, full brick construction
- On-site building management, visitor parking
- Privately positioned on an elevated cul-de-sac
- Facilities include a 25 metre lap pool and gym
- A one off opportunity for the discerning luxury buyer

View



As advertised or by appointment

Agents

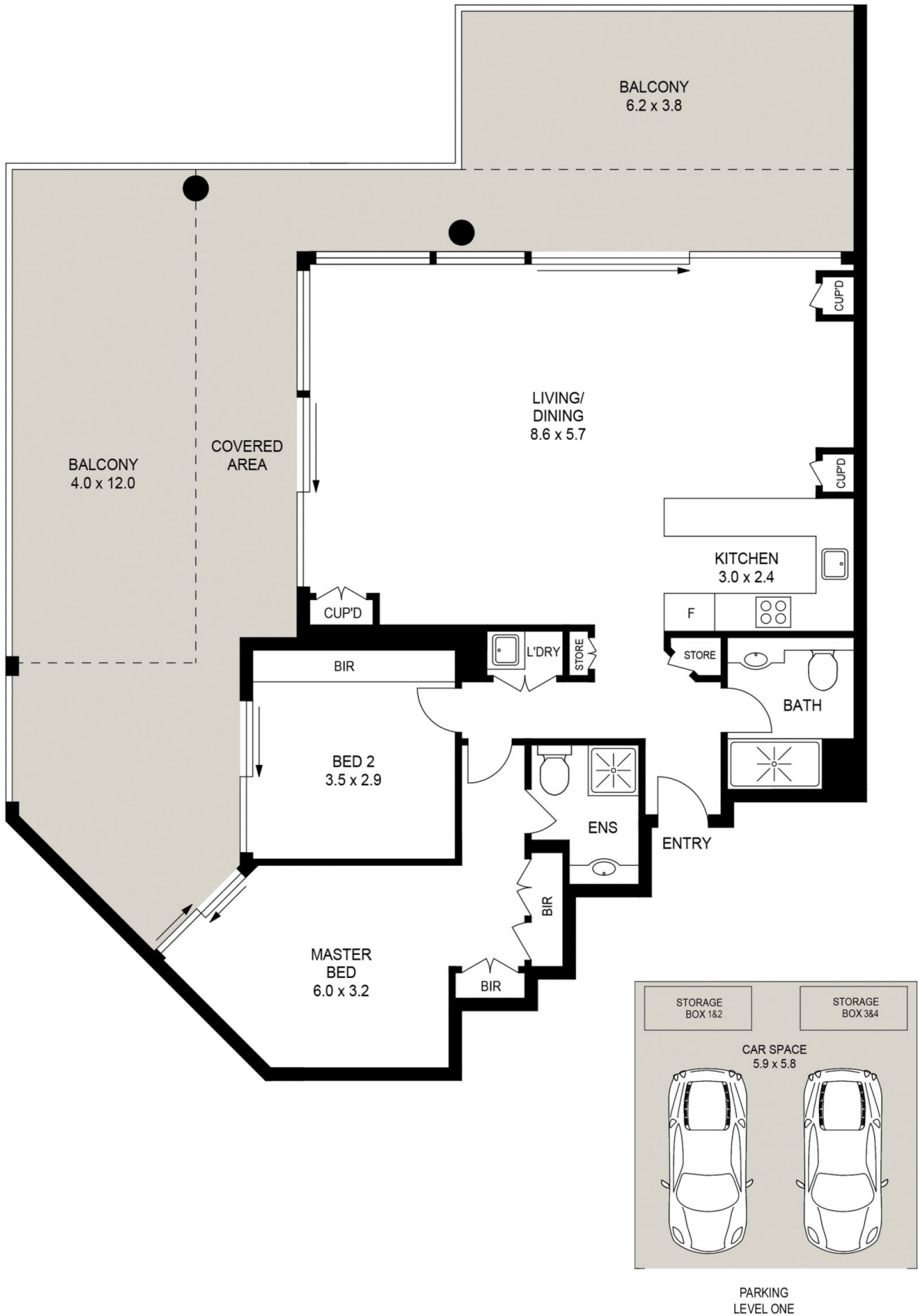
James Crow

 0410 593 057
 james@morton.com.au

Brooklyn Clark

 0410 593 248
 brooklyn.clark@morton.com.au

morton.com.au



PLANS SHOWN ONLY INDICATIVE OF LAYOUT. DIMENSIONS ARE APPROXIMATE.

