



morton.

Rozelle 3/6 Joseph Street

🛏 3 🚗 2 🚗 1

This hidden warehouse conversion combines contemporary design with a unique sense of space to create a private urban retreat. Light-filled interiors are wrapped in lush tropical gardens whilst outdoor living spaces and dazzling cityscape views add a sense of drama and glamour. Completely renovated throughout.

- Gas and Water include
- storage
- One of 4 in tightly held peninsula development
- 3 beds, 2.5 fresh baths, private entry, secure parking
- Master suite with sweeping city and Harbour Bridge views
- Glass-framed living areas merge with lush private gardens
- Under floor heating throughout in bathrooms
- Smart intercom, control via phone
- Granite gas kitchen, internal laundry, hardwood floors
- Walled courtyard garden with a unique window to the city
- Sunny tree-framed dining terrace, custom designer accents
- Storeroom, easy stroll to Rozelle village, 3km to the CBD

View

As advertised or by appointment

Agents

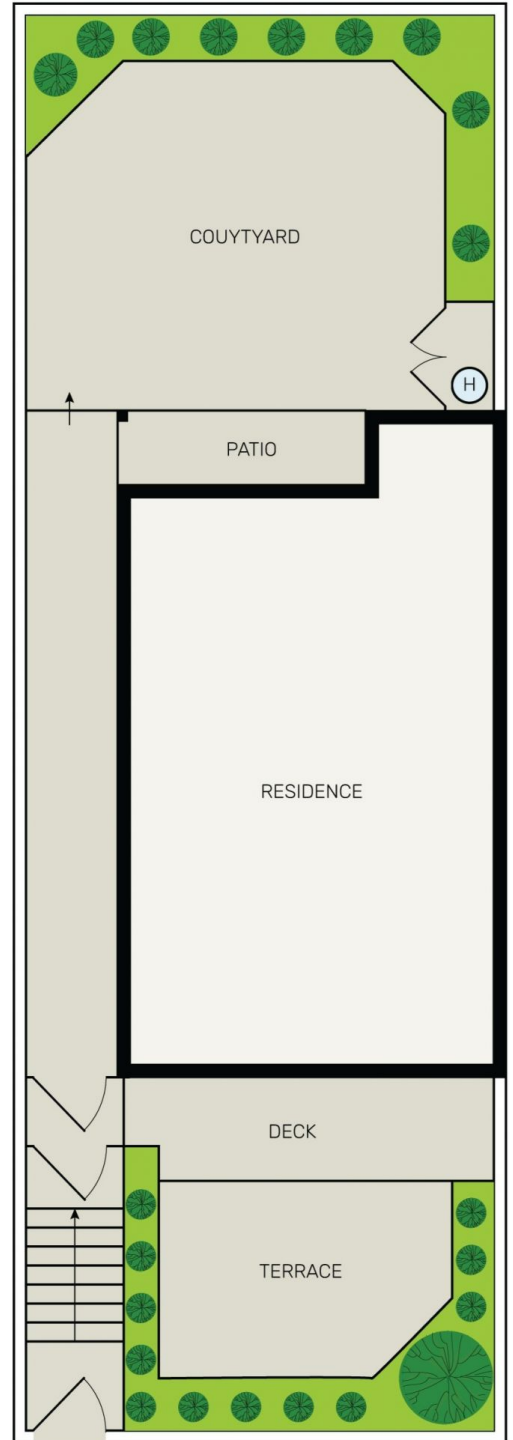
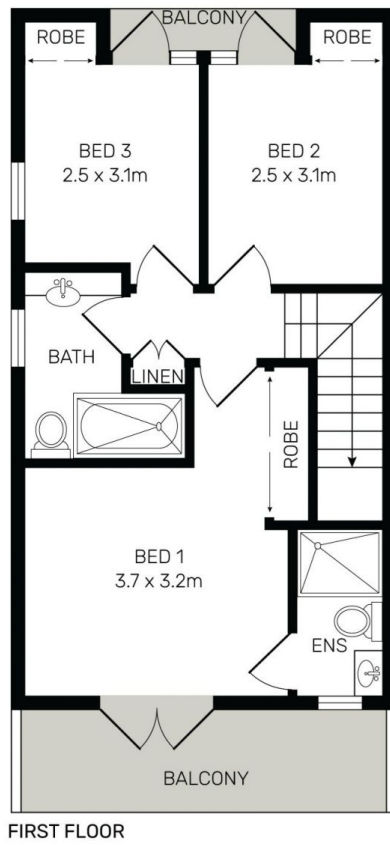
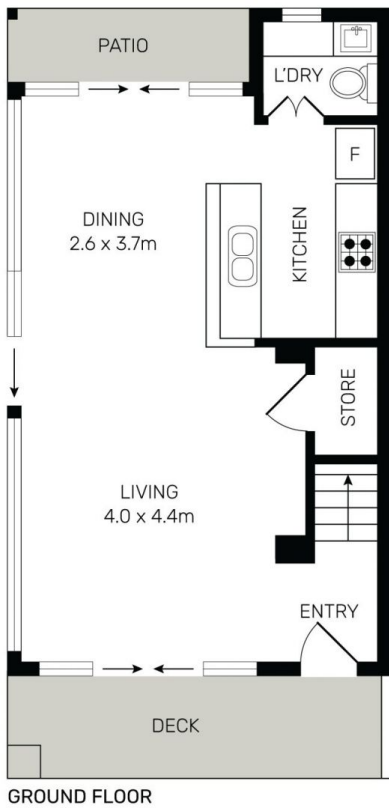
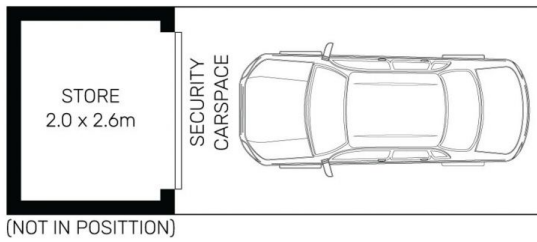
Alexander Karabanov

📞 0409 896 152
 ✉ alexander.karabanov@morton.com.au

Reza Nabavi

📞 0419 283 588
 ✉ reza.nabavi@morton.com.au

morton.com.au



All information contained herein is gathered from all sources we believe to be reliable. However we cannot guarantee its accuracy and interested parties should rely on their own enquiries.



3/6 Joseph Street, Rozelle