



# morton.

**Penrith** 403/101D Lord Sheffield Circuit

 2  2  1

A contemporary residence of the highest caliber, this designer apartment's streamlined design and features combine to create a home with wide ranging appeal. It makes an ideal choice for buyers seeking a high quality easy-to-maintain property that is private, secure and tucked away within the sought-after Thornton Estate community close to the heart of Penrith, with the train station and Westfield shopping 100m away.

- Wide top floor covered balcony with garden views
- Split system air con and blinds throughout the apartment
- Large wool-blended carpeted bedrooms, balcony access and mirrored robes
- Gas kitchen with skylight, stone benchtops, dishwasher, oven & microwave
- Designer bathroom with vanity cupboard and internal laundry with dryer
- Security car space plus storage cage, intercom entry and lift
- A boutique block of 19 apartments, NBN connected, pet friendly building



[morton.com.au](http://morton.com.au)

### View



As advertised or by appointment

### Agents

#### David Lipman

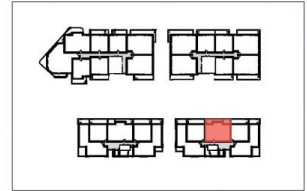
 0409 663 535  
 david@morton.com.au

#### SJ Singh

 0417 085 519  
 sj.singh@morton.com.au



# Apartment D403 2 Bed



Internal	77 m <sup>2</sup>
External	16 m <sup>2</sup>
<b>Total</b>	<b>93 m<sup>2</sup></b>



**THORNTON**  
ThorntonCentral.com.au

Disclaimer: The floor plan has been prepared for marketing purposes only. All descriptions, dimensions, depictions and other details in the floor plan (together, the "Information") may not be to scale. The vendor reserves the right to vary or amend the information without notice. The information may vary from the actual dimensions, layout, and characteristics of the property as built. No third party has any authority whatsoever, either expressly or impliedly, to make or give any representation or warranty or to bind the vendor in connection with the information or the property.  
Date issued: 2/10/2014 Version: 01