



morton.

Luddenham 42 Portrush Crescent

 10  9  8

Situated on an elevated 4000sqm block, this architecturally designed property offers an unparalleled lifestyle. The home itself is designed for multi-generational living, with spacious interiors that seamlessly blend modern luxury with comfort. From the moment you step inside, you'll be captivated by the high ceilings and the abundance of natural light. The open-plan living areas flow effortlessly to the outdoors, where you'll find meticulously landscaped gardens, a sparkling pool, and an alfresco dining area.

- Impressive entry foyer with six-metre-high ceilings awash with natural light
- Open plan chef's kitchen with contemporary appliances, butler's pantry, and wine cellar
- Multiple living zones with polished concrete floors, ideal for multi-generational living
- Two home offices, double height library, and a cinema room with wet bar
- Large, teenager's retreat with separate entrance, ensuite, kitchenette, and private balcony

[morton.com.au](https://www.morton.com.au)

Auction

Wednesday, 03 Jul 2024, 5:30 pm

View

As advertised or by appointment

Agents

Konstantin Melnikov

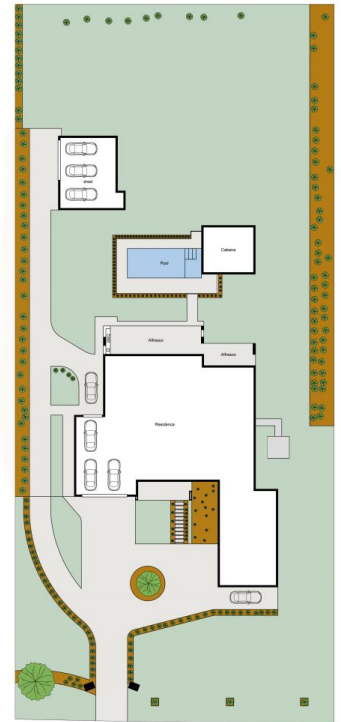
 0421 540 424

 konstantin@morton.com.au

Ferenc Goemoeri

 0447 025 423

 ferenc@morton.com.au



42 Portrush Crescent, Luddenham

Every care has been taken to verify the accuracy of the details and dimensions in this property plan. Prospective purchasers are advised to make their own enquiries to satisfy themselves in all respects. The plan is a representation only and is not necessarily to scale.



First Floor



Ground Floor

