



morton.

Wentworth Point 720/25 Bennelong Parkway

 2  2  2

The Waterfront is located moments to Sydney Olympic Park main venues, train station, Bicentennial Park and Millennium Parklands. Located in Positano, this is your opportunity to move into this two bedroom apartment only a short stroll from The Promenade and The Piazza.

- Glistening water views
- Located on level seven
- Gourmet kitchen with plenty of cupboard space
- Quality stainless steel appliances and gas cooking
- Spacious split level apartment with cross-flow ventilated design
- Good size bedrooms with built-in wardrobes
- Laundry room with clothes dryer
- Outdoor complex pool
- Two secure car spaces (tandem)

View

As advertised or by appointment


Agents

Zarin Hossain

 0418 328 479

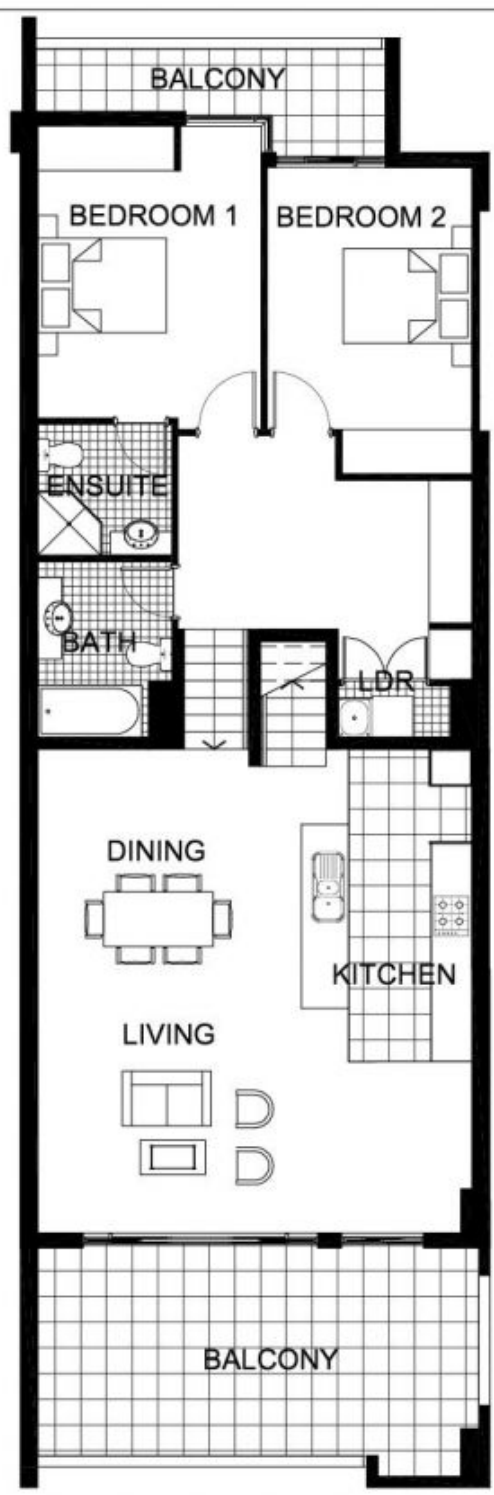
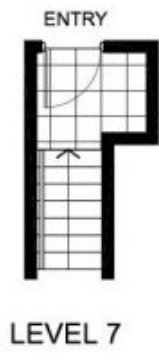
 zarin.hossain@morton.com.au

Nevena Tsahtarlis

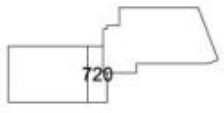
 0428 835 910

 nevena@morton.com.au

morton.com.au



The information contained herein is intended as an introduction to the general content of the project and is subject to variation. Interested parties should rely on their own enquiries and the contract for sale. The developer reserves the right to vary from these descriptions as it deems necessary or as any relevant authority may require.



THE WATERFRONT
AT HOMEBUSH BAY

2 BEDROOM **APARTMENT 720(Exist No.605)**

INTERNAL AREA 104sqm OUTDOOR AREA 24 sqm TOTAL AREA 128 sqm



POSITANO