



morton.

Zetland 705/28 Ebsworth Street



The definition of luxurious contemporary living. A premier opportunity for the couple or investor that has all the amenities of Green Square station, Woolworths, state of the art aquatic centre and East Village just a short stroll from your door.

- Exclusive offering finished to the highest standard
- Large double bedroom with built in robe
- Separate study or small second bedroom
- Impeccably appointed for low maintenance living
- Sophisticated stone kitchen with stainless gas appliances
- Inviting open plan lounge and dining space
- Direct access from bedroom out to the balcony
- Internal laundry
- Ducted air conditioning
- Storage cage

View

As advertised or by appointment

Agents

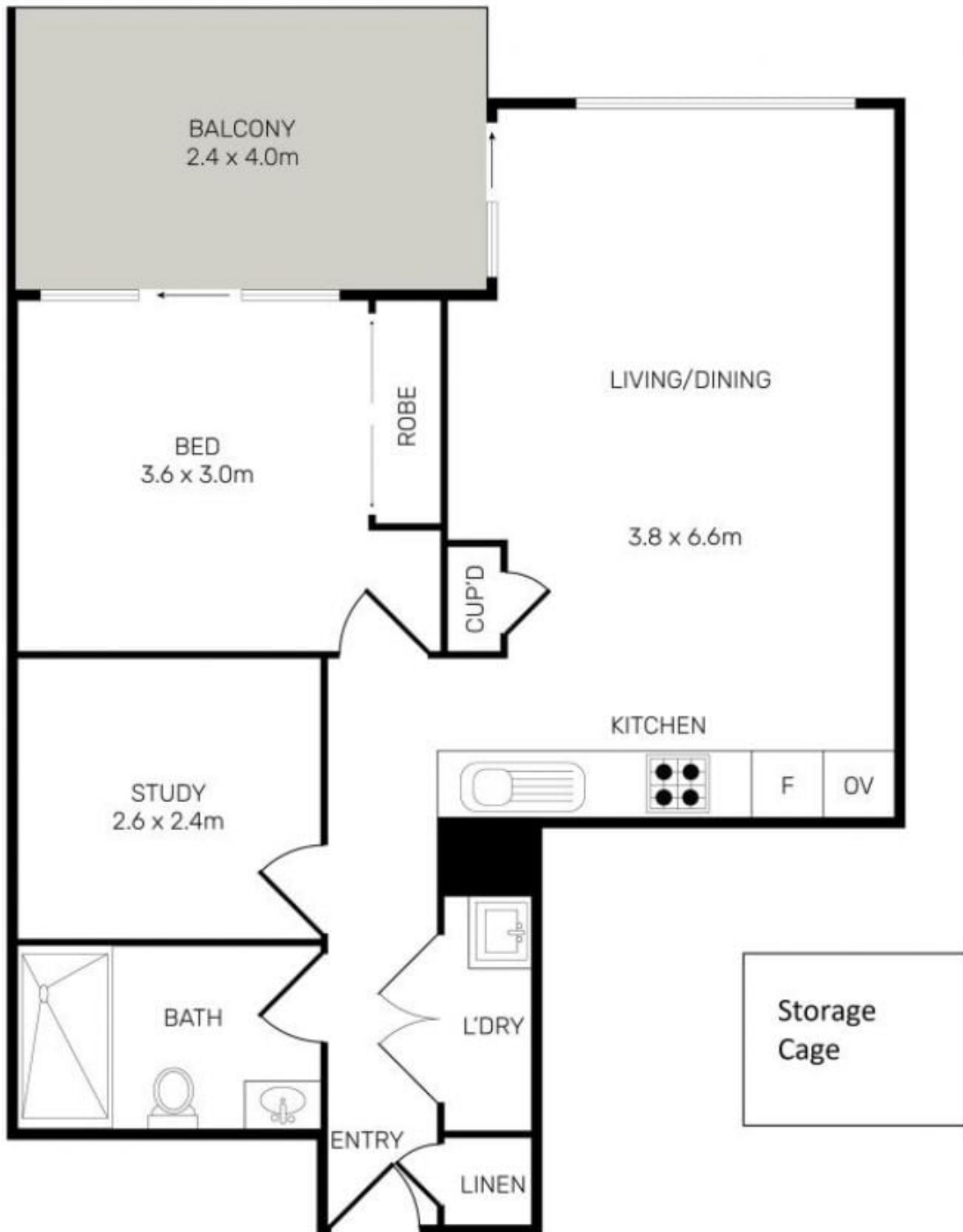
Amber Riethmuller

- 📞 0411 437 673
- ✉️ amber.riethmuller@morton.com.au

Calvin Chan

- 📞 0406 888 028
- ✉️ calvin@morton.com.au

morton.com.au



All information contained herein is gathered from all sources we believe to be reliable. However we cannot guarantee its accuracy and interested parties should rely on their own enquiries.



 CampaignPROS

morton.

Zetland 705/28 Ebsworth Street