



morton.

Zetland 4C Wolseley Grove

 3  3  2

DEPOSIT TAKEN

This modern townhouse is tastefully presented over three levels and centrally located in the ever popular Victoria Park. Spacious open plan living flows seamlessly to the huge entertainer's terrace which is ideal for inner city living. The master bedroom features a huge walk-in robe and a full sized en suite. With an internal laundry and two security parking spaces, this apartment has everything your heart desires.

- Three double bedrooms with robes
- Timber floorboards throughout
- Modern open plan kitchen with gas cooking and dishwasher
- Combined living/dining flows to the large entertaining terrace
- Two security car spaces
- Three generous outdoor areas

View

As advertised or by appointment

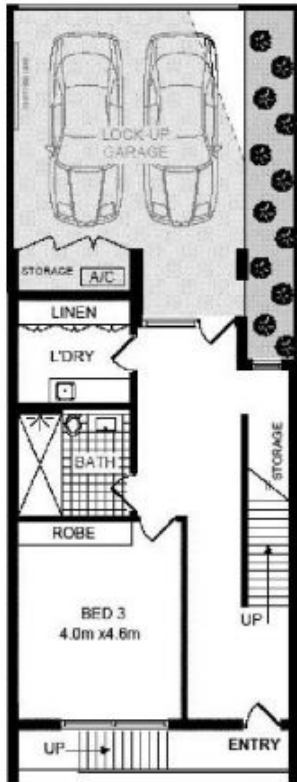
Agent

Alexander Karabanov

 0409 896 152

 alexander.karabanov@morton.com.au

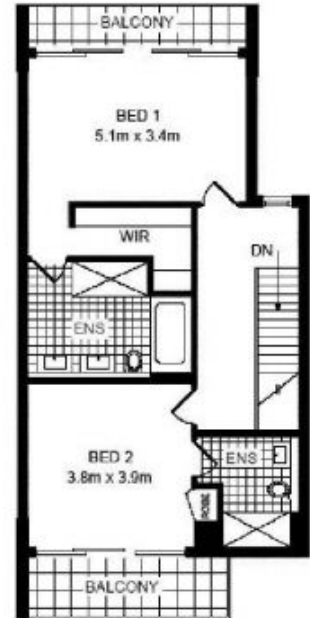
morton.com.au



FIRST FLOOR



SECOND FLOOR



THIRD FLOOR

