



morton.

Rosehill 66/102-108 James Ruse Drive

 1  1

Set in an architectural security building this property consists a bright one-bedroom apartment, presented in great condition and very conveniently positioned within walking distance to a range of amenities, including Harris Park train station, Woolworths supermarket and local cafés. This property has all the convenience of having Parramatta's dining, café, retail and transport services just a few minutes away, with quick and easy access to James Ruse Drive and the M4 WestConnex to the city.

- Property comes with a microwave, washing machine and fridge included
- Spacious bedroom with built-in wardrobe
- Open balcony
- Building lift access
- Carpeted throughout
- Kitchenette style kitchen with eat-in dining room
- Modern bathroom

View

As advertised or by appointment

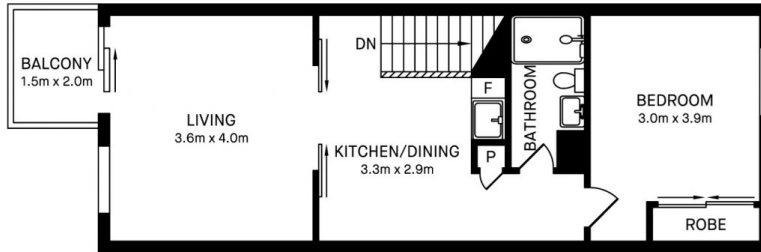
Agent

Nevena Tsahtarlis

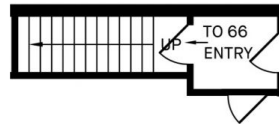
 0428 835 910

 nevena@morton.com.au

morton.com.au



UNIT 66



66/102-108 JAMES RUSE DRIVE, ROSEHILL



Please note these measurements are approximate only. The plans is intended as a rough guide for illustrative purpose. It is not warranted or guaranteed to be correct nor it is part of the sale or rental contract.

