



**morton.**

**Pyrmont** 10/80 Fig Street

 2  2  1

This boutique address incorporates leading edge design, modern inclusions and an ambience of space and serenity. Located in a leafy enclave of Pyrmont, adjacent to Fig Lane Park and just a short walk to the CBD, this development has been carefully designed to suit contemporary taste and a cosmopolitan lifestyle.

- Impressive open plan living and dining areas which flow onto large private decked area
- Spacious, modern kitchen with stainless steel appliances including dishwasher, ample bench space and storage
- Master bedroom with floor to ceiling built-in robe and en-suite and balcony
- Second bedroom of equal size with floor to ceiling built-in robe and balcony
- Additional bathroom with full size bath tub
- Air conditioned and separate internal laundry facilities
- Secure basement parking for one car
- Communal roof terrace with area views

**View**

As advertised or by appointment

**Agent**

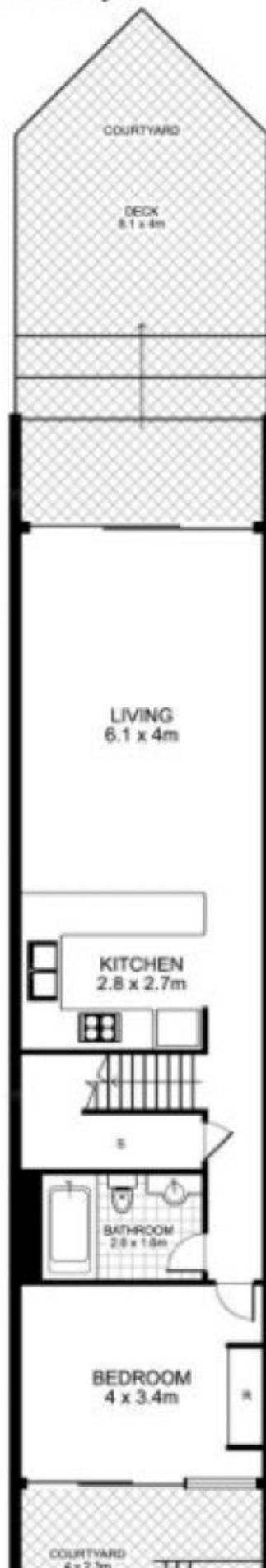
**Cesar Rojas Soto**

 0407 547 996

 cesar.rojas-soto@morton.com.au

**morton.com.au**

**10/211 Bulwara Road,  
PYRMONT**



**UPPER LEVEL**



**Plans by**