



# morton.

**Kirrawee** 413/11 Village Place

 2  2  1

Great opportunity to lease one of Kirrawee's finest and very new apartments in South Village, an iconic development in Sutherland Shire. Conveniently situated only a 180m walk to Kirrawee station, brand new shopping village right at your doorstep with Coles and Aldi supermarkets, eateries and cafes and childcare center. With easy access to the CBD, national parks and Cronulla Beach, South Village offers a unique yet luxury lifestyle.

- Fantastic city/water/national park views
- Generous open plan design with internal size 88sqm
- Abundance of natural light, sleek modern finishes
- Quality designer gas kitchen with European appliances
- Bathroom/ensuite has floor to ceiling tiles, mirrored vanity cabinet
- Spacious bedrooms, built-in or walk-in robes
- Lounge room with gas point and payTV points
- Large entertainer's balcony with gas point for BBQ
- Internal laundry with dryer, air-conditioning, NBN internet
- Security parking plus storage cage, audio intercom live

### View

As advertised or by appointment

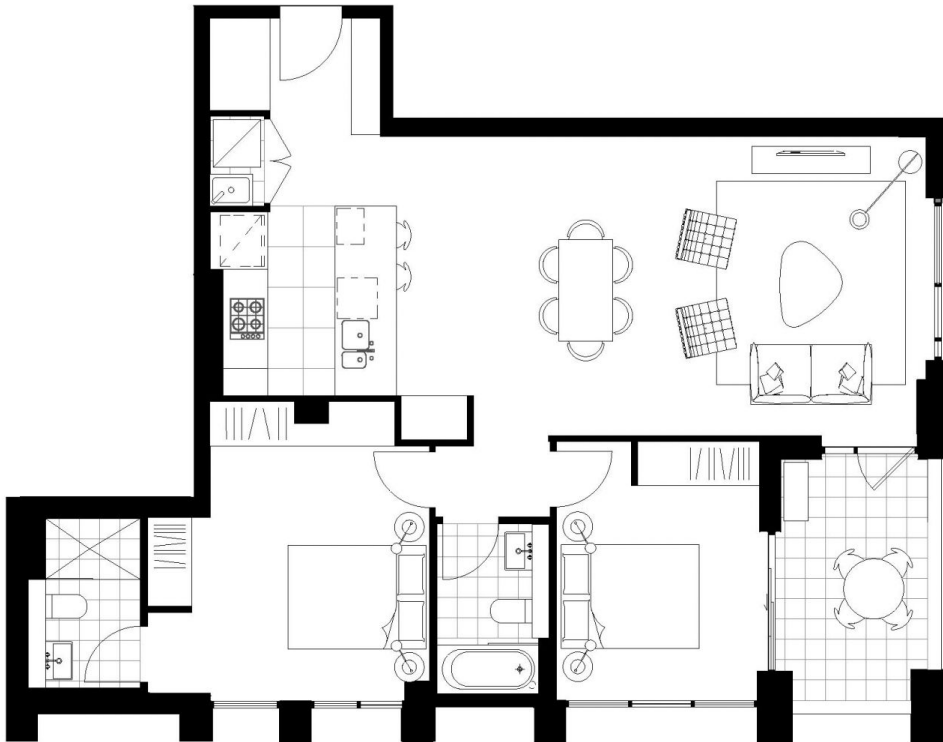
### Agent

**Ray Li**

 0401 311 667

 ray.li@morton.com.au

[morton.com.au](http://morton.com.au)



# VIVID

## LEVEL 5

C5.11 LOT 243

2 BED 2 BATH

INTERNAL 88 Sqm

BALCONY 8 Sqm

**TOTAL 96 Sqm**



**Disclaimer:** This floor plan has been prepared for marketing purposes only. All descriptions, dimensions, locations and other details in this floor plan are not to scale and may vary from the property as built. Your attention is drawn to the special conditions of the contract for sale of land. No third party has any liability to make or give any representation or warranty in relation to the property unless the representation or warranty is contained in the South Village Pty Ltd ACH 864 771726 and included in the contract for sale of land. Furniture shown is not included. 9/12/2017

[vividsoothvillage.com.au](http://vividsoothvillage.com.au)

South Village brought to you by

**PAYCE**



Marketed by

**BOSTON**  
MARKETING