



morton.

Zetland 620/1 Hutchinson Walk

 1  1  1

Luxury 'Platinum' complex just next to Victoria park with all convenience. This contemporary apartment offers natural light and well functional layout. With open plan living and dining area extends to a sun washed covered balcony. Bright bedroom with walk in wardrobe and modern kitchen fitted with quality European appliances. Only mins walk to East Village shops, Restaurants, Bus stops, Train station, Library and Gunyama Park Aquatic and Recreation Centre.

Features:

- North facing with city and park views
- Open plan living and dining area
- Bright bedroom with walk in wardrobe
- Quality European appliances
- Air conditioning
- Security intercom and lift access;
- Single secure car space plus storage
- Walk distance to Green Square Station, buses
- Indoor pool, spa, gym, and steam rooms for resident use

morton.com.au

View

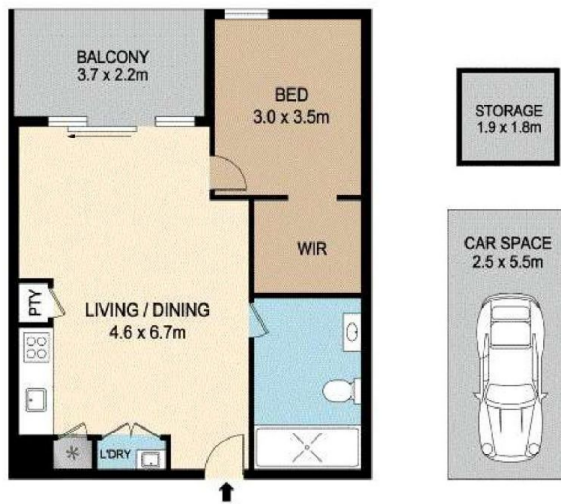
As advertised or by appointment

Agent

Alexander Karabanov

 0409 896 152

 alexander.karabanov@morton.com.au



620/1 HUTCHINSON WALK, ZETLAND



DISCLAIMER : PLANS SHOWN ARE FOR MARKETING PURPOSES ONLY. ALL DIMENSIONS ARE APPROXIMATE AND NOT TO SCALE. THEY ARE SUBJECT TO ERRORS AND INACCURACIES AND NO LIABILITY WILL BE ACCEPTED. INTERESTED PARTIES SHOULD MAKE THEIR OWN INQUIRES.