

**morton.**

**Westmead** 61/35-37 Darcy Road

 3  2  2

This unit is located in a fantastic location next to Coles supermarket and within walking distance to Westmead Station and Westmead Hospital. Other features include:

- Kitchen with gas cooking and dishwasher
- Internal laundry with dryer
- Ensuite to main bedroom
- Main bathroom with shower over bath
- Small courtyard area with an extra 2 balconies
- Floorboards throughout, no carpet!
- 2 secure car spaces with store room
- Built-ins to all bedrooms
- Open plan combined lounge and dining room area


#### **View**

As advertised or by appointment

#### **Agents**

##### **Zarin Hossain**

 0418 328 479

 [zarin.hossain@morton.com.au](mailto:zarin.hossain@morton.com.au)

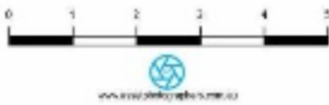
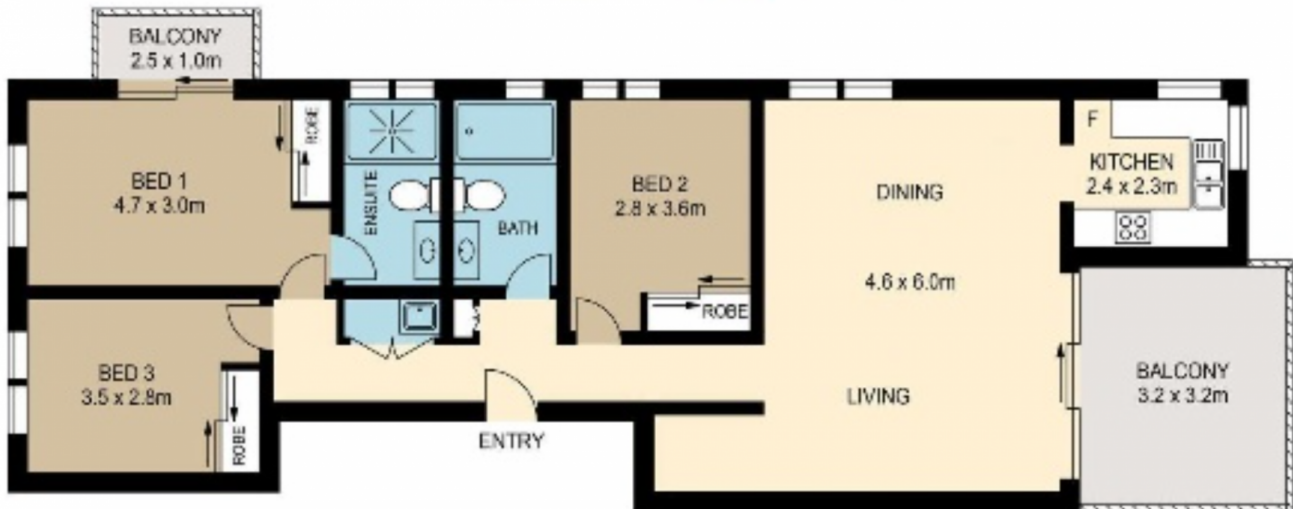
##### **Nevena Tsahtarlis**

 0428 835 910

 [nevena@morton.com.au](mailto:nevena@morton.com.au)

**morton.com.au**

65/35-37 DARCY ROAD, WESTMEAD



Please note these measurements are approximate only. The plan is intended as a rough guide for illustrative purposes. It is not warranted or guaranteed to be correct nor is it part of the sale or rental contract.

