



morton.

Chatswood 5 The Crescent

 4  2  2

Nestled within a peaceful yet remarkably accessible position to Chatswood, this circa 1925 architecturally redesigned home presents a rare blend of serenity, convenience and modern family living. A welcoming north-facing verandah offers serene vistas, whilst the easterly patio enveloped by an established garden and a sprawling lawn, provides a peaceful backdrop for outdoor gatherings. With sustainable credentials including solar panels and a heat pump hot water system, this home harmoniously combines ecological consciousness with contemporary comfort.

- Sizeable family home with four generous bedrooms, 2 baths, and a large attic office
- Private leafy 1359sqm block with established gardens including hard landscaping
- Indoor living spaces seamlessly extend to the north and east, and out to the garden
- Easy walk to Chatswood train station, Westfield, and a variety of dining options
- Reverse-cycle AC, Miele induction cooktop and Earthwool

morton.com.au

View



As advertised or by appointment

Agents

Lucy White

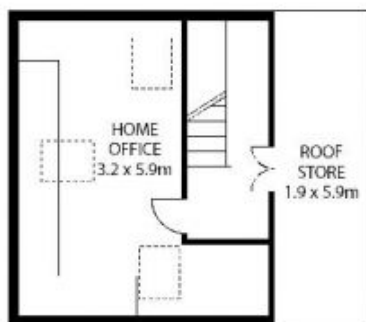
 0413 930 760
 lucy@morton.com.au

Rachael Hurrell

 0493 951 669
 rachael.hurrell@morton.com.au



GROUND FLOOR



FIRST FLOOR



LOWER GROUND FLOOR



SITE PLAN

