



# morton.

**Ermington** 505/1 Allambie Street

🛏 2 🚿 2 🚗 2

Offering a naturally carefree lifestyle for those seeking style, space and elevated urban views, this exceptional top floor apartment makes a superb penthouse-style home of wide-ranging appeal. Set high in the quality Sierra complex, this two-bedroom-plus-study apartment makes an idyllic lock-up-and-leave retreat with a great-sized floorplan boasting elevated outlooks over the district, and a top location close to all of Ermington's amenities.

- Light and airy open design with crisp and modern finishes
- Enclosed all-weather balcony provides a second living space
- Two generous bedrooms plus a separate study/media area
- Designer kitchen with Smeg gas fittings and good workspace
- Convenient lift access to a security car space in the basement
- Air-conditioning, modern bathroom, ensuite and laundry
- Quick access to the CBD, Parramatta and Macquarie Business Park

## View

As advertised or by appointment

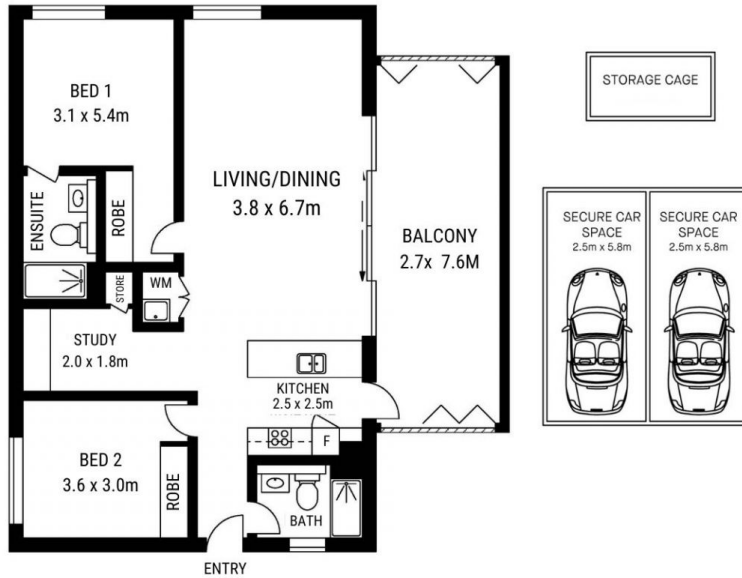
## Agent

**Dylan Choe**

📞 0416 932 977

✉ dylanchoe@morton.com.au

**morton.com.au**



505/1 ALLAMBIE STREET, ERMINGTON 2115



[www.assetphotographers.com.au](http://www.assetphotographers.com.au)

Please note these measurements are approximate only. The plans are intended as a rough guide for illustrative purpose. It is not warranted or guaranteed to be correct nor is it part of the sale or rental contract.