



morton.

Zetland 519/1 Hutchinson Walk



This great sized one-bedroom residence creates an instant impact with its generous proportions, sleek designer finishes and luxury on-site leisure facilities. It is set within a prestige architectural complex and offers a quality lifestyle property that has all the amenities of Victoria Park, East Village and Green Square station a stroll from the front door.

- Bright open plan design featuring living and dining areas
- Level access to a private balcony with elevated outlooks
- Double bedroom with built-in plus a separate study
- Designer kitchen with dishwasher and Miele gas appliances
- Fresh modern decor and easy-to-maintain tiled flooring
- Good-sized designer bathroom plus an internal laundry
- Air conditioning, video intercom, data/TV points, LED lighting
- Exclusive access to the building's premium resort amenities
- Secure Car Space
- Storage Cage

View

As advertised or by appointment

Agents

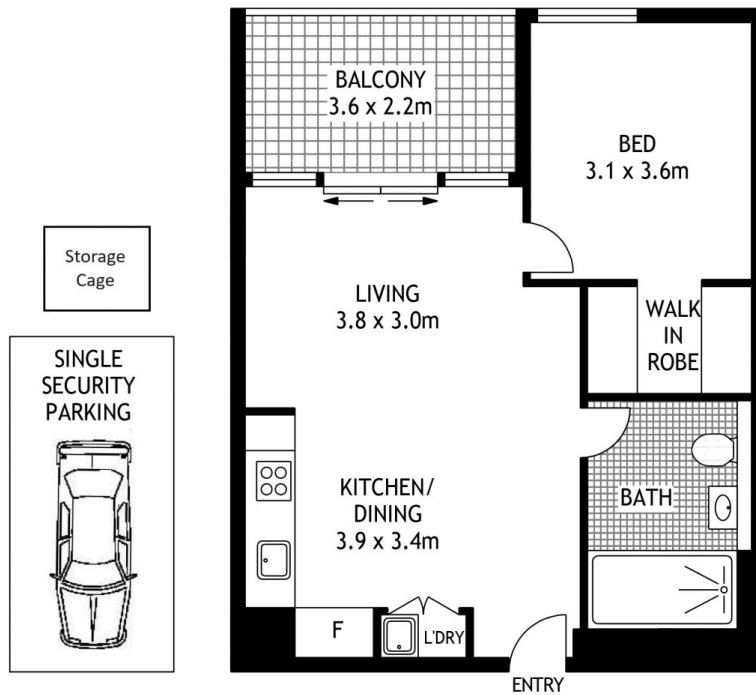
Calvin Chan

📞 0406 888 028
✉ calvin@morton.com.au

Jackson Figueiras

📞 0448 764 345
✉ jackson@morton.com.au

morton.com.au



519/1 HUTCHINSON WALK

ZETLAND

SCAPE Floor Planing Disclaimer: This floor plan is conceptual only. It is provided for illustrative purposes only and should not be relied upon. We make no guarantees to the correctness of this plan. All interested parties should make and rely on their own enquiries in determining the accuracy of the information contained in this floor plan.