



morton.

Newington 16/1 Sandpiper Crescent

 2  2  1


View

As advertised or by appointment

Agent

Dylan Choe

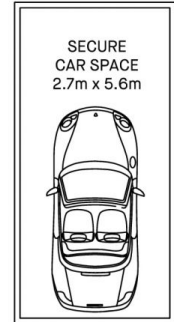
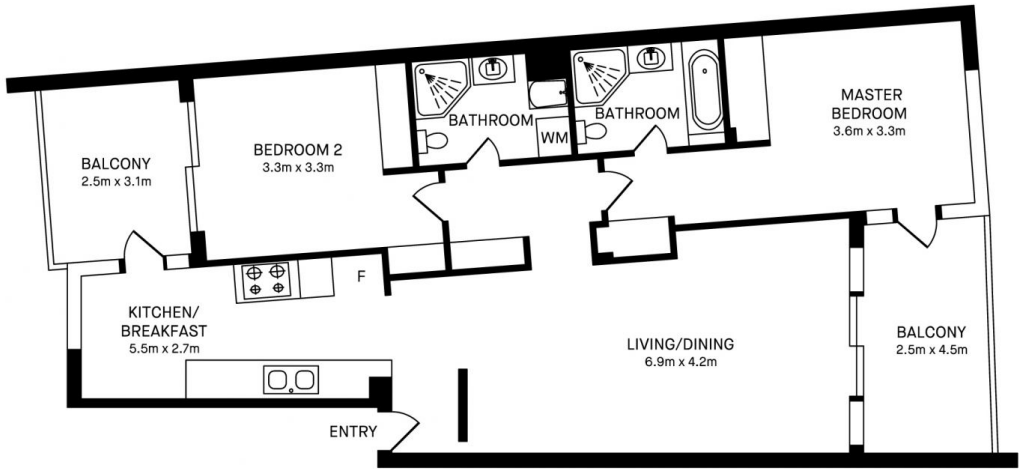
 0416 932 977

 dylanchoe@morton.com.au

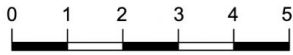
Convenience, community and easy urban style combine for an amazing lifestyle with this quality two-bedroom apartment. Situated within the Mirvac-designed Fraser building directly opposite the Millennium Parklands, it brings light, quality and space to its list of many special features and provides a well-designed living space with tree-filled views over the surrounding area.

- Smart and stylish interiors have a flowing single-level layout
- A sun-filled open planned design features easy-clean flooring
- Two balconies that both enjoy expansive views over parklands
- Two bedrooms are positioned at opposite ends of the floorplan
- Both bedrooms have built-ins and private access to a balcony
- Modern user-friendly kitchen with adjoining dining/study space
- A security car space, air-conditioning and intercom entry
- Pet-friendly building with acres of open green space close by

morton.com.au



16/1 SANDPIPER CRESCENT, NEWINGTON



Please note these measurements are approximate only. The plans is intended as a rough guide for illustrative purpose. It is not warranted or guaranteed to be correct nor it is part of the sale or rental contract.

