



**morton.**

**Penrith** 420/1-39 Lord Sheffield Circuit

 2  2  1

Located in the hub of North Penrith, Harts Landing offers contemporary urban living in a master planned vibrant community called Thornton Estate. Only metres from Penrith train station, Westfield shopping centre and local parks.

#### Features

- Covered balcony, northeast facing with Blue Mountains views
- Tiled open living and dining area, LED lighting throughout
- Filled with natural light from the floor to ceiling windows
- Reverse cycle air conditioning, block-out roller blinds throughout
- Stylish kitchen with stone bench-tops, soft close drawers & cupboards
- Four burner stove top with stainless steel dishwasher and oven
- Wool-blend carpeted bedrooms with mirrored built-in robes
- Master with walk-in robe and quality en-suite
- NBN ready, Data/TV/PayTV points in the living & bedroom
- Quality bathroom with mirrored vanity cabinet

#### View

As advertised or by appointment

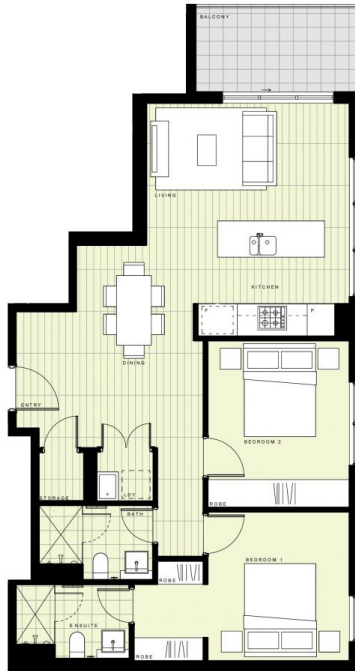
#### Agent

**Georgia Borland**

 0448 430 247

 georgia.borland@morton.com.au

**morton.com.au**



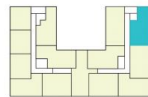
## BUILDING A

### LEVEL 4

#### APARTMENT A420 LOT 33

2 BEDROOM

INTERNAL AREA	73m <sup>2</sup>
EXTERNAL AREA	6m <sup>2</sup>
<b>TOTAL</b>	<b>79m<sup>2</sup></b>



Disclaimer: This floor plan has been prepared for marketing purposes only. All descriptions, dimensions, depictions and other details in this floor plan may not be to scale and may vary from the property as built. Your attention is drawn to the special conditions of the contract for sale of land. No third party has any authority to make or give any representation or warranty in relation to the property unless the representation or warranty is confirmed by the vendor and included in the contract for sale of land. Revised floor plans - 14.08.18

**CALL 1300 548 588**  
**HARTSLANDING.COM.AU**  
 LORD SHEFFIELD CIRCUIT, PENRITH  
**LINK DISPLAY SUITE**  
 22 GADIGAL AVENUE, ZETLAND

PROUDLY DEVELOPED BY **PAYCE** SALES BY **LINK**