



morton.

Zetland 315/17 Joynton Avenue

 1  1

Wonderfully positioned in the bustling new precinct in Victoria Park, the famous 'Emerald Park' apartments provide a new level of living. This amazingly stylish one bedroom apartment offers split-level layout with spacious lounge downstairs and sun-drenched bedroom upstairs. The open plan living and dining areas flow out onto an oversized balcony with views. The unit features contemporary design and quality features.


- Integrated modern kitchen with stainless steel appliances
- Dishwasher, oven and gas cooking
- Built-in wardrobe in the bedroom
- Luxury bathroom with floor to ceiling tiles
- Polyurethane finish joinery with ample storage
- Internal laundry with dryer
- Storage cage in basement
- Intercom, broadband and Foxtel connection
- A resort beach pool and BBQ area with outdoor spa

View

As advertised or by appointment

Agent

Alexander Karabanov

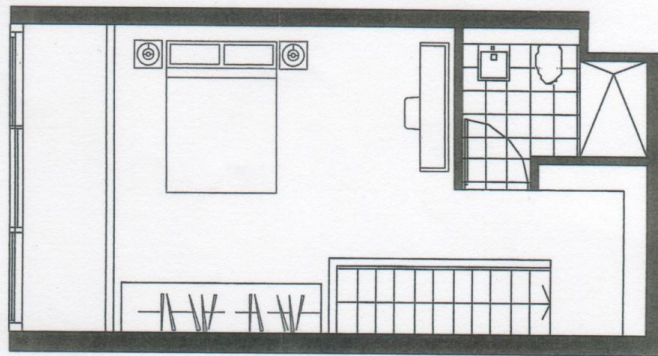
 0409 896 152

 alexander.karabanov@morton.com.au

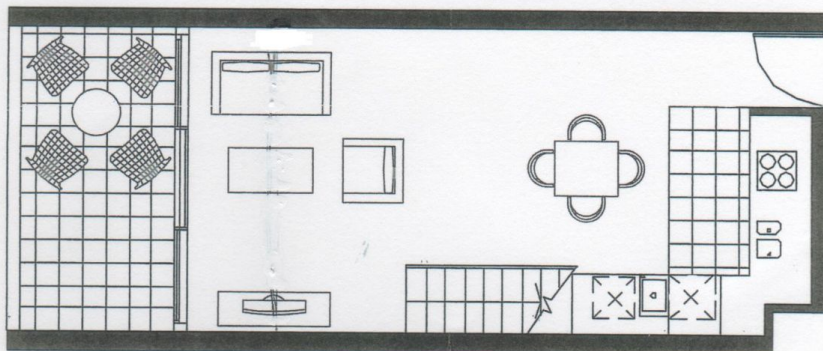
morton.com.au

Unit Number 3.15
 1 Bedroom + Study Loft

Strata Area 68
 Internal Area 60
 External Area 8

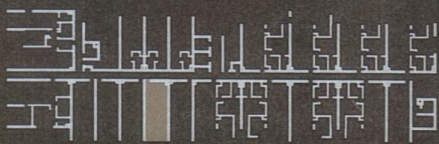


Upper Level



Lower Level

13 Joynton Avenue, ZETLAND



Eton

DISCLAIMER: Please note that this floor plan was produced prior to the completion of construction. The information contained herein is believed to be correct but is not guaranteed. Dimensions and areas are approximate. Changes may be made during development and construction. The architect, engineer, designer, builder, and specifications are subject to change without notice in accordance with the provisions of the Contract of Sale. The furniture and fixtures depicted are not included with any sale. NOTE: B. Already necessary for services and structure are not depicted.



R 28 12 03 07 s36 Building 2D