



# morton.

**Zetland** 611/5 O'Dea Avenue

 2  2  1

Fully renovated modern split-level apartment conveniently located in the heart of Zetland. Situated in a stunning development, this apartment is ideally located with close proximity to public transport, shops, restaurants, banks, and shopping centres. Just a short stroll from Green Square train station.

Be part of a new era of style and quality living, offering parkland views and greenery. The apartment have been designed to embrace a home that features a modern and contemporary feel. Spacious apartment with luxury internal fittings and a resort style living.

#### Features:

- Timber flooring throughout
- Secure underground parking
- Recently renovated kitchen with modern appliances
- Large balcony with city views
- Building facilities include oasis style pool, lap pool and barbecue area

#### View

As advertised or by appointment

#### Agent

**Alexander Karabanov**

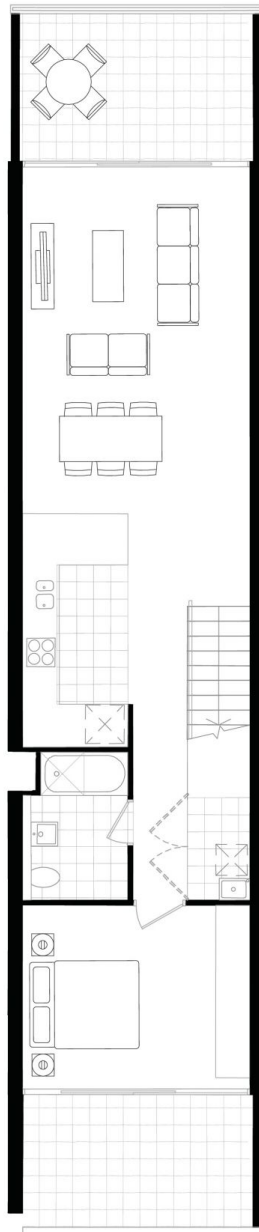
 0409 896 152

 [alexander.karabanov@morton.com.au](mailto:alexander.karabanov@morton.com.au)

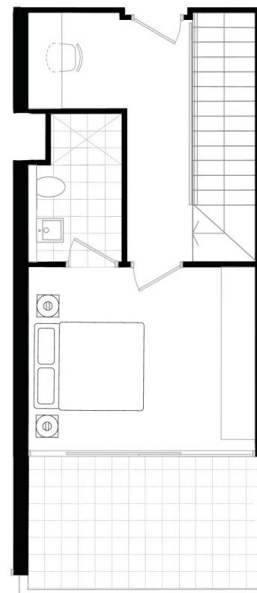
[morton.com.au](http://morton.com.au)

Unit Number 6.11 8.11 10.11  
 2 Bedroom + Study

Estimated Apartment  
 Strata Area 135m<sup>2</sup>  
 Internal Area 94m<sup>2</sup>  
 External Area 28m<sup>2</sup>



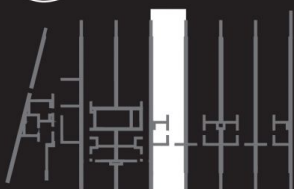
Lower Level



Upper Level



13 Joynton Avenue, ZETLAND



EPIC



DISCLAIMER: Please note that this floor plan was produced prior to the completion of construction. The information contained herein is believed to be correct but is not guaranteed. Dimensions and areas are approximate. Changes may be made during development and dimensions, tile setout, areas, fittings, finishes and specifications are subject to change without notice in accordance with the provisions of the Contract of Sale. The furniture and curtains depicted are not included with any sale. NOTE: Bulkheads necessary for services and structure are not depicted.