

**morton.**

**Sydney Olympic Park** 1603/1 Australia Avenue



A dynamic location that offers quick and easy access to Sydney's vibrant Olympic Park precinct attractions means this blue-chip 16th floor apartment delivers lifestyle in all directions. It makes an instant impact with its sleek and modern design that combines style, light and sweeping city views to provide a private retreat up high in a quality security building, and within a lift ride to a range of café, dining and shopping options.

- An elevated position that captures panoramic skyline views
- Good-sized floorplan with a bright open living/dining space
- A large enclosed balcony offers an extension of the interior
- Double bedroom with wardrobes and access to the balcony
- Separate study/storage area with plenty of built-in cupboards
- Kitchen with stone benches, gas cooking and modern appliances
- Air-conditioning and a security car space with lock-up storage

**View**

As advertised or by appointment

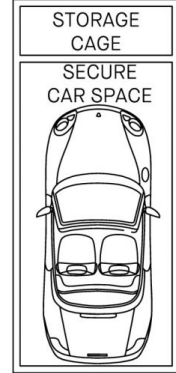
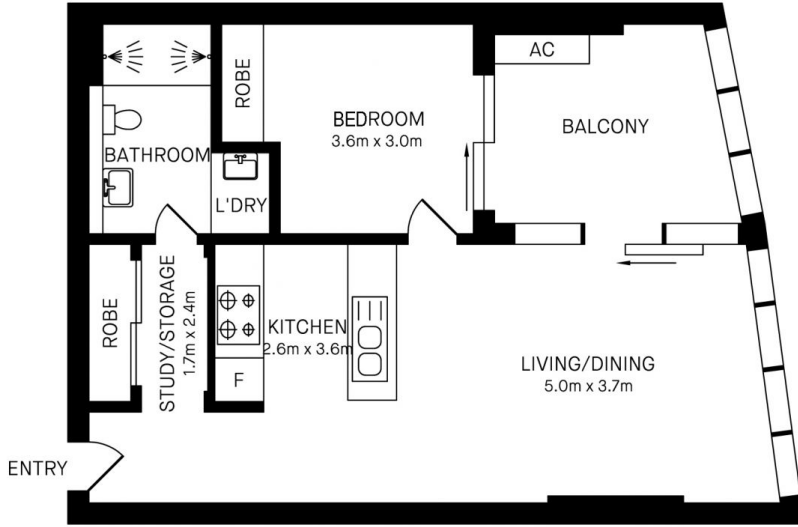
**Agent**

**Dylan Choe**

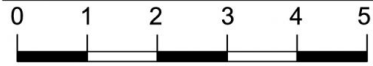
📞 0416 932 977

✉️ [dylanchoe@morton.com.au](mailto:dylanchoe@morton.com.au)

**[morton.com.au](http://morton.com.au)**



1603/1 AUSTRALIA AVENUE, SYDNEY OLYMPIC PARK



Please note these measurements are approximate only. The plans is intended as a rough guide for illustrative purpose. It is not warranted or guaranteed to be correct nor it is part of the sale or rental contract.

