



morton.

Wentworth Point 685/4 The Crescent

🛏 2 🚿 2 🚗 1

Located in Valencia at The Waterfront, here is your opportunity to move into this split level two bedroom apartment. A short stroll to The Piazza, local restaurants, convenience store, pharmacy, public transport off Hill Road and ferry service to Parramatta and City CBD. The Waterfront is located moments to Sydney Olympic Park main venues and train station, Bicentennial Park and Millennium Parklands.

- This apartment is located on level 6
- Open plan combined living room
- Three spacious balconies with beautiful water views from the lounge room
- Ducted air conditioning
- Full size family kitchen with plenty of cupboard space
- Quality stainless steel appliances including microwave, dishwasher and gas cooktop
- Good size bedrooms with en-suite to main bedroom
- Waterfront complex pool
- Laundry room and clothes dryer
- Single security undercover car space and a storage cage

View

As advertised or by appointment

Agents

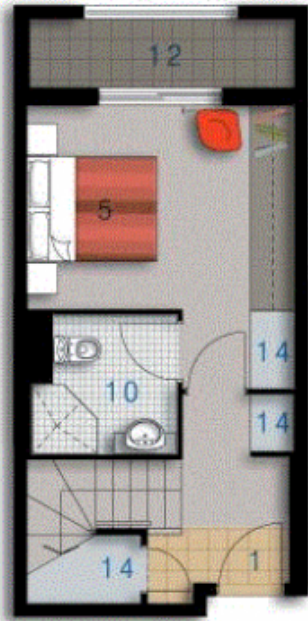
Zarin Hossain

📞 0418 328 479
✉ zarin.hossain@morton.com.au

Nevena Tsahtarlis

📞 0428 835 910
✉ nevena@morton.com.au

morton.com.au

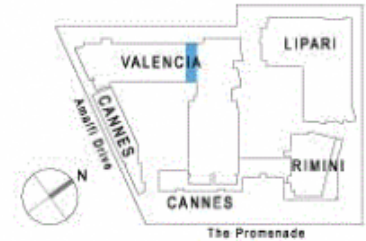


LOWER



UPPER

ENTRY	01
LIVING	02
DINING	03
KITCHEN	04
BEDROOM 1	05
BEDROOM 2	06
BATHROOM	09
ENSUITE	10
LAUNDRY	11
BALCONY	12
STORAGE	14
CLOTHES DRYING	15



valencia

Unit 685

Lot Number	69
Type	2 Bedroom
Unit Area	94m ²
Balcony	16m ²
Total	110m ²
Scale	1:125
Revision	A (16.02.07)

0 2.5 5M



Disclaimer: All Layouts are indicative only, and subject to change.