



morton.

Oxley Park 5/73-75 Melbourne Street

 3  2  1

Highly sought-after Oxley Park neighbourhood! This exceptional townhouse offers everything you've been looking for, combining style, comfort, and convenience.

Features:

- Three spacious bedrooms
- Ensuite and walk-in robe to the main bedroom
- Beautifully open plan tiled living space
- Ducted reverse cycle air conditioning throughout
- Equipped with top-of-the-line appliances,
- Ample storage space, and sleek countertops,
- Downstairs toilet and laundry
- Internal access to a single lock-up garage
- Private courtyard that requires minimal upkeep

View

As advertised or by appointment

Agent

Georgia Borland

 0448 430 247

 georgia.borland@morton.com.au

morton.com.au

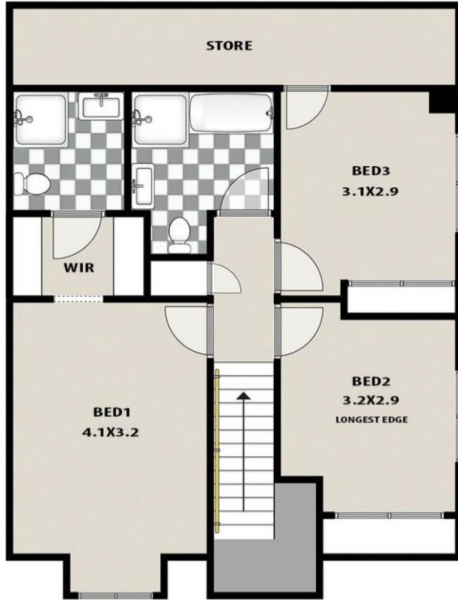
LEGEND



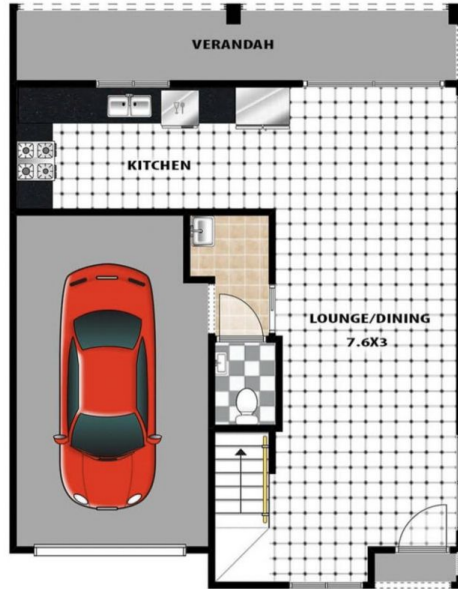
BATHROOM
ENSUITE : WC



LAUNDRY



FIRST FLOOR



GROUND FLOOR