



# morton.

**Wentworth Point** 209/4 The Piazza

 2  2  1

Located in Santorini at The Waterfront, here is your opportunity to move into this two bedroom apartment. A short stroll to The Piazza, local restaurants, convenience store, pharmacy, public transport off Hill Road and ferry service to Parramatta and City CBD. The Waterfront is located moments to Sydney Olympic Park main venues and train station, Bicentennial Park and Millennium Parklands.

#### Property features



- Brand new carpets and blinds installed throughout
- Second floor apartment with views of the iconic Piazza
- Split system air-conditioning
- Family size kitchen with quality stainless steel appliances and gas cooking
- Generous size separate living and dining areas
- Spacious bedrooms with built-in wardrobes
- Two good size balconies
- Internal laundry room and clothes dryer
- Single lock up garage

#### View



As advertised or by appointment

#### Agents

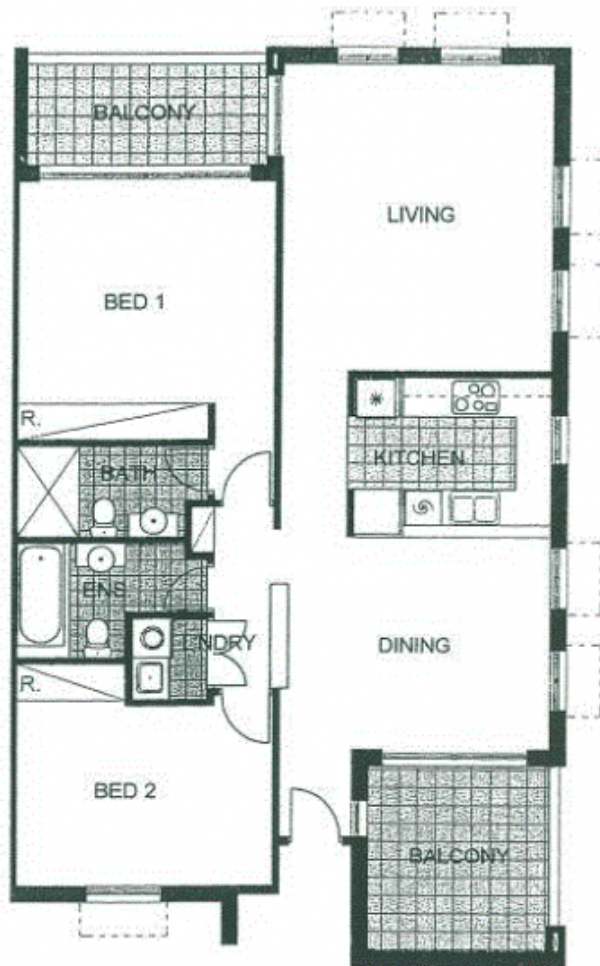
##### Zarin Hossain

 0418 328 479  
 zarin.hossain@morton.com.au

##### Nevena Tsahtarlis

 0428 835 910  
 nevena@morton.com.au

[morton.com.au](http://morton.com.au)



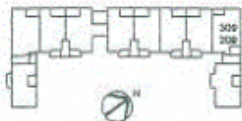
\*The information contained herein is intended as an introduction to the general content of the project and is subject to variation. Interested parties should rely on their own enquiries and the contract for sale. The developer reserves the right to vary from these descriptions as it deems necessary or as any relevant authority may require.



**2 BEDROOM**

**APARTMENT 209,309**

**TYPE-F**



INTERNAL AREA=111 m<sup>2</sup>

OUTDOOR AREA= 15 m<sup>2</sup>

TOTAL AREA= 126 m<sup>2</sup>

**LOT 14**

**SANTORINI**