



**morton.**

**Rosehill** 66A/102-108 James Ruse Drive



Set in an architectural and secure building, this self-contained studio presented in great condition and very conveniently positioned within minutes to a range of amenities, including Harris Park train station, Woolworths supermarket and local cafés. It has all the convenience of having Parramatta's dining, café, retail and transport services just a few minutes away, with quick and easy access to James Ruse Drive and the M4 WestConnex to the city.

- Bright interiors are fresh, airy and well-appointed throughout
- Spacious studio with large balcony
- Air-conditioning, kitchen and a bathroom
- Secure car space, lift access and intercom entry
- Well-managed security building with shared internal garden

#### **View**

As advertised or by appointment

#### **Agents**

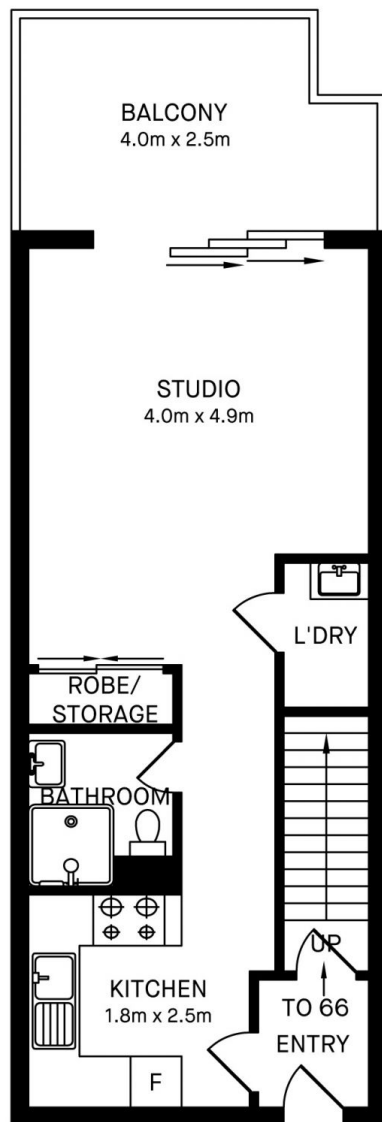
##### **Nevena Tsahtarlis**

- ☎ 0428 835 910
- ✉ [nevena@morton.com.au](mailto:nevena@morton.com.au)

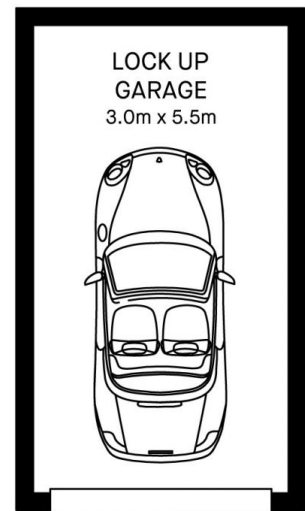
##### **Zarin Hossain**

- ☎ 0418 328 479
- ✉ [zarin.hossain@morton.com.au](mailto:zarin.hossain@morton.com.au)

**morton.com.au**



**UNIT 66A**



**GARAGE**

66A/102-108 JAMES RUSE DRIVE, ROSEHILL



Please note these measurements are approximate only. The plans is intended as a rough guide for illustrative purpose. It is not warranted or guaranteed to be correct nor it is part of the sale or rental contract.

