



**morton.**

**Wentworth Point** 424/45 Amalfi Drive

 2  1  1

Ideally placed in one of exclusive Wentworth Point's premier buildings, this invitingly low-maintenance apartment offers a private lifestyle of comfort, convenience and quality that is perfect for the first-time buyer or investor alike. Simply a matter of a few short moments to the heart of village life, this well-proportioned residence flows over an intuitively designed 110 sqm and is bathed in afternoon sunshine.

- Inviting open plan lounge and dining area flows to a balcony
- Chic Caesarstone kitchen includes stainless gas appliances
- Impressive master bedroom comes with a built-in wardrobe
- With new hardwood floors, air-conditioning and high ceilings
- Stylish bathroom has separate bath and shower, Euro laundry
- Ample visitor parking and a convenient 5sqm storage cage
- Free membership to Pulse Gym, pools and tennis courts


**View**

As advertised or by appointment

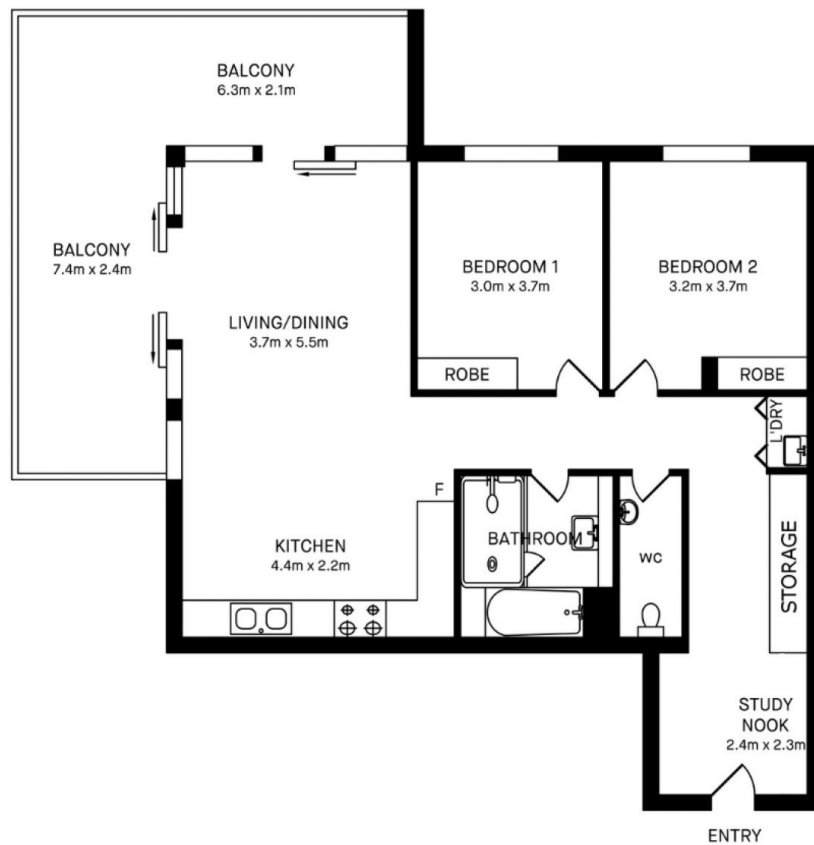
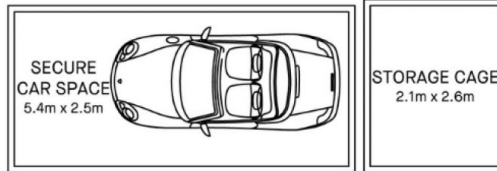
**Agent**

**Dylan Choe**

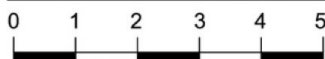
 0416 932 977

 [dylanchoe@morton.com.au](mailto:dylanchoe@morton.com.au)

**morton.com.au**



424/45 AMALFI DRIVE, WENTWORTH POINT



Please note these measurements are approximate only. The plans is intended as a rough guide for illustrative purpose. It is not warranted or guaranteed to be correct nor it is part of the sale or rental contract.

