



**morton.**

**Penrith** 507/60 Lord Sheffield Circuit

 2  2  1

Wildwood Apartments within Sheffield Quarter is located on the north side of Penrith train station situated in the highly sought-after master-planned community Thornton Estate. With uninterrupted park and district views, offering convenient apartment living only metres to Penrith train station, Westfield shopping centre, local parks and quality restaurants and cafes.

- Large 18sqm wrap around balcony with sweeping park and estate views
- Corner position, presenting one common wall
- Plantation shutters in both carpeted bedrooms, presents a homely feel, mirrored robes, master with ensuite
- Stylish VeriShade dual purpose blinds to embrace light and privacy from the floor to ceiling windows in the open living and dining area with floorboards and air con
- Eat-in kitchen with marble-look benchtops, integrated fridge and freezer, 4-burner AEG gas cooktop, smeg microwave
- Good-sized study room, internal laundry with dryer, NBN
- Rooftop BBQ area and seating with panoramic views of the


**morton.com.au**

**View**

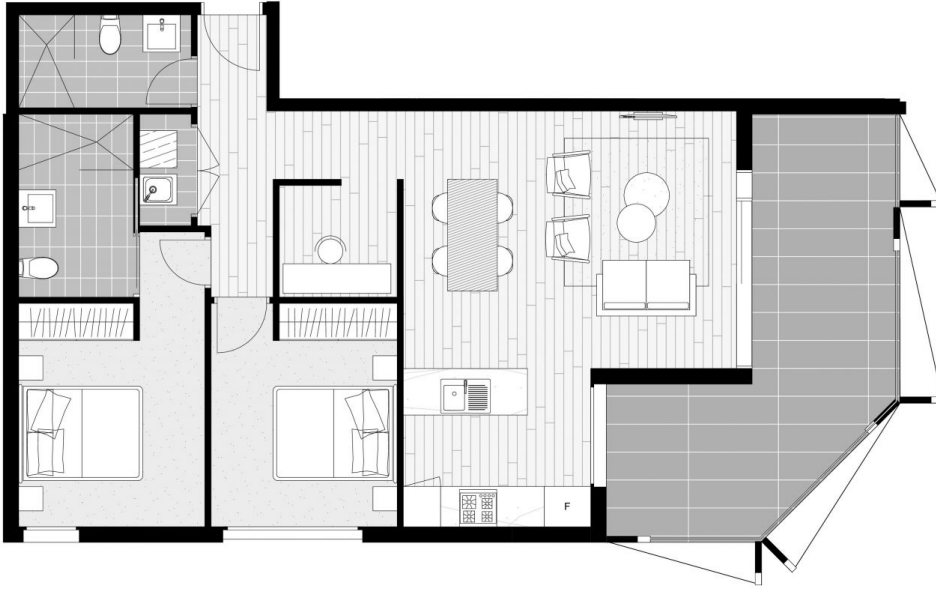
As advertised or by appointment

**Agent**

**Anthony Fleming**

 0437 929 484

 [anthonyf@morton.com.au](mailto:anthonyf@morton.com.au)



# SHEFFIELD QUARTER

THORNTON

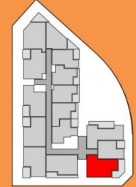
## TWO BEDROOM + STUDY APARTMENT

UNIT 2.07 LOT 29  
 UNIT 3.07 LOT 44  
 UNIT 4.07 LOT 59  
 UNIT 5.07 LOT 74

INTERNAL AREA: 78 m<sup>2</sup>  
 EXTERNAL AREA: 26 m<sup>2</sup>

TOTAL: 104 m<sup>2</sup>

PARKING: 1



URBAN CBRE



All apartments subject to contract and availability. Images showing the building, interiors and views are computer generated prior to construction and indicative only. Dimensions, layout, finishes and specifications are subject to change and may differ from those shown. Views differ between apartments. Ground floor retail not yet confirmed. Furniture and plantings are for decorative purposes and are not included.