



**morton.**

**Westmead** 25/17B Booth Street

 2  2  1

Great opportunity to lease in the Asha development in Westmead. This development is perfectly positioned just minutes away from Parramatta CBD with easy access to transport, schools, Westfield shopping centre and Parramatta Park.

- Generous open plan design with fresh modern décor
- Beautiful designer kitchen
- Timber flooring throughout living area plus ample storage
- Both bathrooms have floor to ceiling tiles, mirrored vanity cabinet
- Spacious bedroom with built-in robe, abundance of natural light
- Good size covered balcony
- Audio/visual intercom
- Laundry with dryer
- Ducted air-conditioning
- Secure car park and storage cage in basement


#### **View**

As advertised or by appointment

#### **Agents**

##### **Zarin Hossain**

 0418 328 479

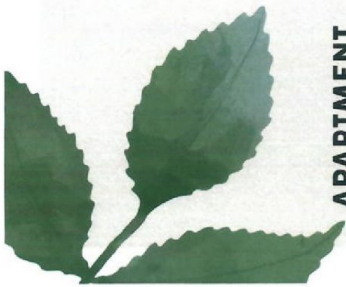
 zarin.hossain@morton.com.au

##### **Nevena Tsahtarlis**

 0428 835 910

 nevena@morton.com.au

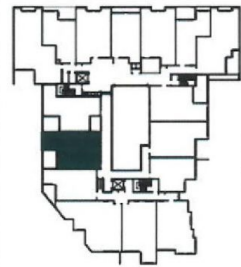
**morton.com.au**



**APARTMENT**

**25**

<b>BEDROOMS</b>	<b>02</b>
<b>BATHROOMS</b>	<b>02</b>
<b>INTERNAL</b>	<b>77m<sup>2</sup></b>
<b>EXTERNAL</b>	<b>10m<sup>2</sup></b>
<b>TOTAL AREA</b>	<b>87m<sup>2</sup></b>



**LEVEL 02**

Disclaimer: The provided information is set out as a general guide to reflect the developers current intentions. All information is believed to be correct at the time of campaign development and is subject to CC. All incoming purchasers should seek their own legal advice. Furniture items are not included.