



# morton.

**Penrith** 210/81A Lord Sheffield Circuit

 2  2  1

This stylish apartment located in the hub of Penrith - Thornton - offers convenient apartment living in a master-planned community only metres from the Penrith rail hub, Westfield shopping centre and local parks.

#### Features

- Apartment is situated on Level 2
- Reverse-cycle A/C, southeast facing staying cool in summer
- Stylish gas kitchen with Caesarstone benchtops
- Ample storage, soft close cupboards and draws
- Stainless steel appliances including microwave and dishwasher
- Open living and dining with engineered timber floorboards
- Wool-blend carpeted bedrooms, mirrored built-in robes
- Quality bathroom/ensuite with mirrored vanity cabinet
- Large internal laundry with dryer

#### View

As advertised or by appointment

#### Agent

**Georgia Borland**

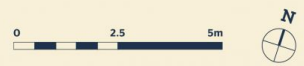
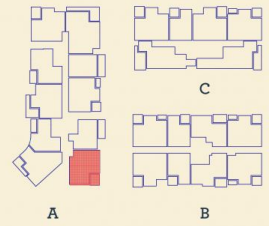
 0448 430 247

 [georgia.borland@morton.com.au](mailto:georgia.borland@morton.com.au)

[morton.com.au](http://morton.com.au)

*Apartment*

2 BED - A 210



Internal	75 m <sup>2</sup>
External	10 m <sup>2</sup>
<b>Total</b>	<b>85 m<sup>2</sup></b>

DATE ISSUED 27/07/2015  
VERSION 02

Developed by St Hilliers FIRST POINT PROJECTS | Sales by LINK Home Land Direct [thorntoncentral.com.au](http://thorntoncentral.com.au)

**Disclaimer:** This floor plan has been prepared for marketing purposes only. All descriptions, dimensions, depictions and other details in this floor plan together, the "Information" may not be to scale. The vendor reserves the right to vary or amend the Information without notice. The Information may vary from the actual dimensions, layout and characteristics of the property as built. No third party has any authority whatsoever, either expressly or impliedly, to make or give any representation or warranty or to bind the vendor in connection with the information or the property.

**THORNTON**