



**morton.**

**Wentworth Point** 406/4 Footbridge Boulevard

 1  1  1

Located in Quarterdeck, here is your opportunity to move into this one bedroom apartment. A short stroll to The Wharf, local restaurants, convenience store, pharmacy, public transport off Hill Road and ferry service to Parramatta and Sydney CBD. The Waterfront is located moments to Sydney Olympic Park main venues and train station, Bicentennial Park and Millennium Parklands.



- Wide fronted full kitchen and living spaces with a winter garden balcony
- Superb natural light
- Quality fittings and inclusions
- Reverse cycle air conditioning in bedroom and lounge
- Excellent on floor storage and storage cage
- Single car space in secure basement

#### View



As advertised or by appointment

#### Agents

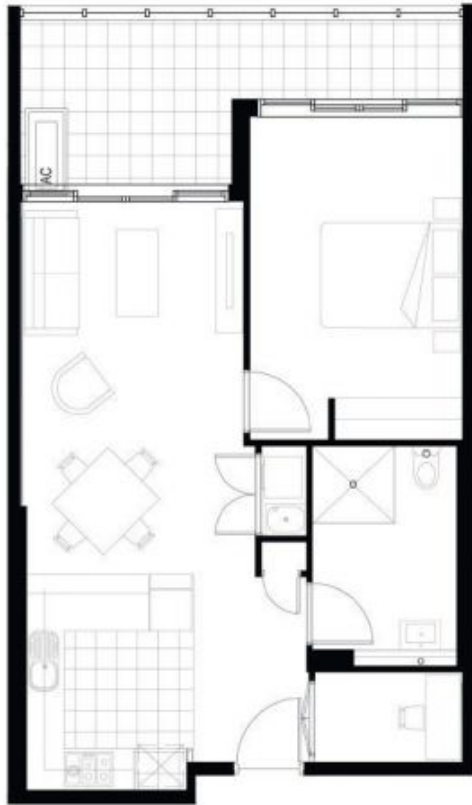
##### Nevena Tsahtarlis

 0428 835 910  
 nevena@morton.com.au

##### Zarin Hossain

 0418 328 479  
 zarin.hossain@morton.com.au

[morton.com.au](http://morton.com.au)



**Disclaimer:** The particulars are set out as a general outline for the guidance of intending purchasers and do not constitute an offer or contract. All descriptions, dimensions, references to conditions and necessary permissions for law and other details are given in good faith and are believed to be correct, but any intending purchaser should not rely on them as statements or representations of fact, but must satisfy themselves by inspection or otherwise as to the correctness of each item, and where necessary seek advice. No third party supplier or their agents has any authority to make or give any representations or warranty in relation to this property.



- A4.306
- (w) A4.406
- (w) A4.506
- A4.606
- A4.706
- (w) A4.806
- (w) A4.906

*(w) winter garden*

Internal Area	55m <sup>2</sup>
External Area	11m <sup>2</sup>
<b>Total Area</b>	<b>66m<sup>2</sup></b>



**WENTWORTH POINT  
MARINAS**