



# morton.

**Zetland** 147/6B Defries Avenue

 2  2  1

This impressive two bedroom apartment is set in the APEX development in Victoria Park. The property is designed to maximize floor space and finished to an exceptional standard. Immaculate open living space flows onto the sun drenched balcony with an abundance of natural light coming through the home.

- Spacious bedrooms with built in wardrobes and ample storage space
- Modern bathrooms including ensuite with master bedroom
- Brand new carpets in the bedrooms
- Brand new LED lighting throughout
- Stainless Steel european appliances which includes dishwasher, gas cooktop, Stone benchtop and mirrored splash-back
- Reverse cycle air conditioning
- Internal laundry with dryer included
- Secure basement car space and storage cage included
- Exclusive rooftop garden with BBQ facilities

### View

As advertised or by appointment

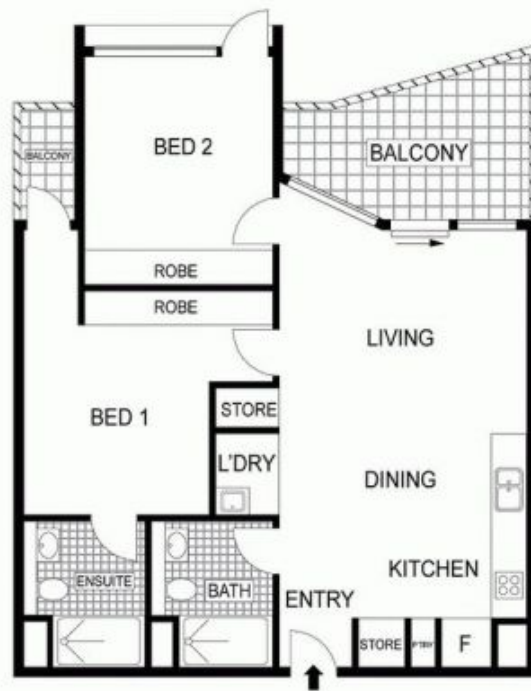
### Agent

**Kristian Karaspyros**

 0436 477 102

 kristian.karaspyros@morton.com.au

[morton.com.au](http://morton.com.au)



Plans shown are for presentation purposes only and are not part of any legal document or title. They are subject to errors, omissions, inaccuracies and should not be used as a sole and accurate reference. Interested parties should make their own inquiries using independent sources.