

# morton.

**Glebe** 7/48-64 Wentworth Park Road

1 1

Ideally situated in the vibrant heart of Glebe, this apartment represents an opportunity to live in style, luxury and comfort. Just steps away from the charming Wentworth Park, Blackwattle Bay foreshore, minutes to Broadway shopping centre and light rail service, this address seamlessly connects you to the very heart of the CBD.

- Functional open plan living and dining area
- Sleek kitchen with stone benchtop and built-in Miele appliances
- Contemporary bathroom with plenty of vanity storage
- Well-appointed bedroom with built-in wardrobes
- Soaring 5 meter ceiling heights
- Moments walk to light rail
- Footsteps to Blackwattle Bay and Fish Markets

## View

As advertised or by appointment

## Agents

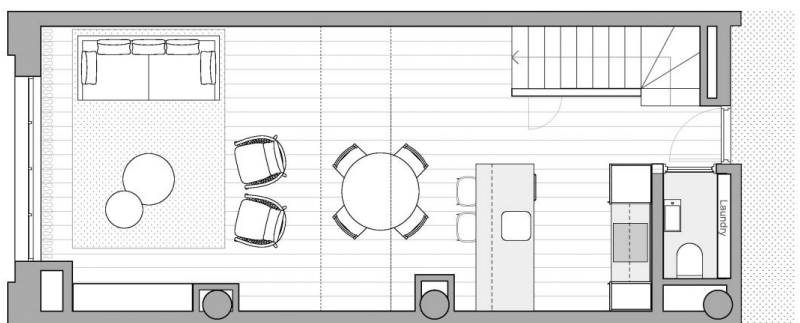
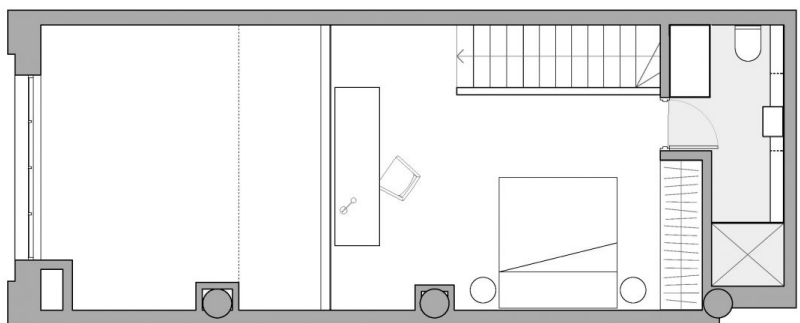
### Emma Ryan

0409 325 440  
 emmar@morton.com.au

### Kristian Karaspyros

0436 477 102  
 kristian.karaspyros@morton.com.au

**morton.com.au**



DISCLAIMER: This floor plan has been prepared for marketing purposes only. All descriptions, dimensions, depictions and other details in this floor plan may not be scale and may vary from the property as built. Your attention is drawn to the special conditions of the contract for sale of land. No third party has any authority to make or give any representation or warranty in relation to the property unless the representation or warranty is confirmed by the developer and included in the contract for sale of land.

# WENTWORTH

48-64 Wentworth Park Road, Glebe

APARTMENT 7  
1 Bedroom 7 Loft  
Ground Level & Level 1

STRATA AREA	
Apartment	76 m <sup>2</sup>
Storage	3 m <sup>2</sup>
Total	79 m <sup>2</sup>