



**morton.**

**Penrith** 926/1-39 Lord Sheffield Circuit

 2  2  1

Located in the hub of North Penrith, Harts Landing apartments are near new, unfurnished and offer contemporary urban living in a master planned vibrant community called Thornton Estate. Only metres from Penrith train station, Westfield shopping centre and local parks.

- 9th floor North facing with large tiled open living and dining area
- Extra large balcony with double doors and scenery Blue Mountains views
- Stylish kitchen with stone bench-tops with soft close drawers and cupboards
- Four burner stove top with stainless steel appliances i.e dishwasher and microwave
- Internal laundry with dryer
- Efficient LED lighting throughout
- Reverse cycle air conditioning
- Wool-blend carpeted bedrooms, mirrored built-in robes
- Quality bathroom/en-suite
- Video intercom with security and lift access

**View**

As advertised or by appointment

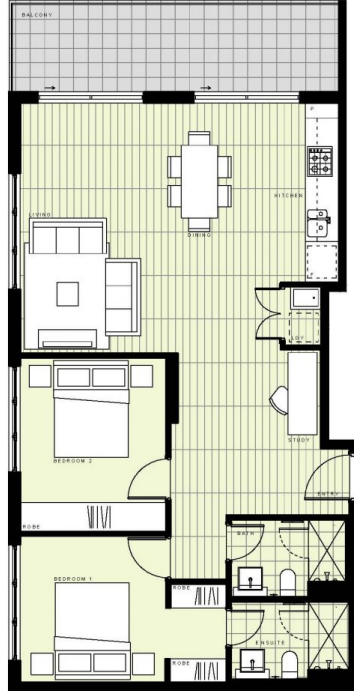
**Agent**

**Georgia Borland**

 0448 430 247

 georgia.borland@morton.com.au

**morton.com.au**



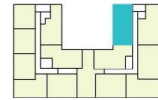
## BUILDING A

### LEVEL 9

#### APARTMENT A926 LOT 109

2 BEDROOM + STUDY

|               |                        |
|---------------|------------------------|
| INTERNAL AREA | 78m <sup>2</sup>       |
| EXTERNAL AREA | 11m <sup>2</sup>       |
| <b>TOTAL</b>  | <b>89m<sup>2</sup></b> |



Disclaimer: This floor plan has been prepared for marketing purposes only. All descriptions, dimensions, depictions and other details in this floor plan may not be to scale and may vary from the property as built. Your attention is drawn to the special conditions of the contract for sale of land. No third party has any authority to make or give any representation or warranty in relation to the property unless the representation or warranty is confirmed by the vendor and included in the contract for sale of land. Revised floor plans - 14/03/16

CALL 1300 546 588  
[HARTSLANDING.COM.AU](http://HARTSLANDING.COM.AU)  
 LORD SHEPPHELD CIRCUIT, PENRITH  
 LINK DISPLAY SUITE  
 22 GADIGAL AVENUE, ZETLAND

PROUDLY DEVELOPED BY **PAYCE** SALES BY **LINKK**