



morton.

Wollstonecraft 3/19 Shirley Road

 1  1  1

Nestled within a serene cul-de-sac bordering the scenic Berry Island Reserve, this exclusive apartment is located in one of Wollstonecraft's most prestigious neighbourhoods providing an enviable living experience.

- Bright, airy, open plan living and dining space
- Spectacular views from the apartment
- Balcony
- Spacious kitchen with washing machine and dishwasher
- Bedroom has built-ins
- Full brick, one common wall, timber floors
- Internal laundry facilities
- 12 month lease preferred, available 1st November 2023

View

As advertised or by appointment

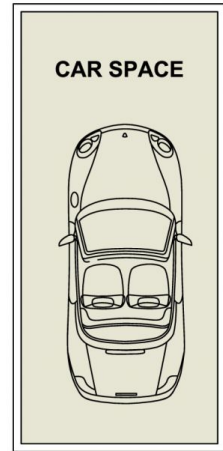
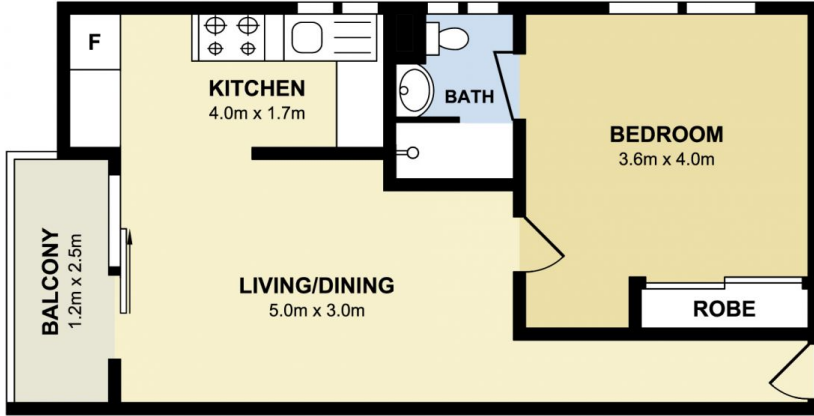
Agent

Martyna Majno

 0438 544 328

 martyna.majno@morton.com.au

morton.com.au



morton.

Wollstonecraft 3/19 Shirley Road