



**morton.**

**Homebush** 20/52-58 Parramatta Road

 2  2  1

Conveniently located within minutes walking distance to both Homebush and North Strathfield train stations, footsteps from bus links to Parramatta and Strathfield. This contemporary property is situated ideally for travel, recreational parks and retail needs. This split level apartment is meticulously and spaciouly designed, boasting timber floors, remote controlled LED lights and near paint throughout.

**View**

As advertised or by appointment

**Agent**

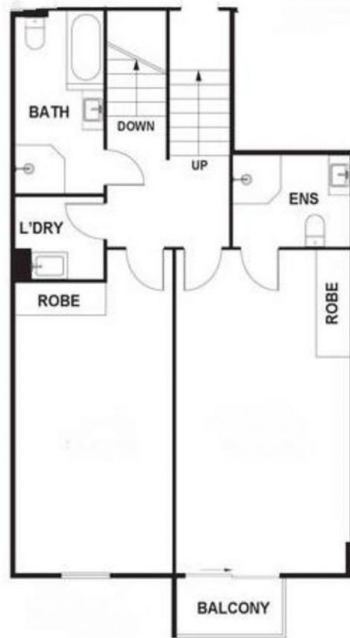
**Nevena Tsahtarlis**

 0428 835 910

 nevena@morton.com.au

- Spacious living and dining area with air conditioner flowing into a big balcony with double glazed windows
- Stone benchtop kitchen boasting gas cooking, abundance of storage, and a dishwasher
- Spacious bedrooms with built ins and air conditioning
- Master featuring en-suite and a balcony with electric shutter for extra privacy
- Internal laundry with clothes dryer
- Floor to ceiling tiles to bathrooms, main with spa bath and separate shower
- Common rooftop terrace adds benefit to well maintained secure complex

**morton.com.au**





Location Shot:  
Homebush  
Public School