



# morton.

**Burwood** B707/27-31 Belmore Street

 1  1  1

Set in the dynamic residential community B1 adjacent to Burwood Plaza and only a short stroll to Westfield and the train station, is this exceptional one bed apartment enjoying CBD views from its 7th floor position.

- Quality fixtures and finishes
- Expansive north-east views to the CBD
- Flooded with natural light throughout
- Spacious open plan living, entertainers size balcony
- Gourmet kitchen, SMEG appliances
- Built-in robes
- Internal laundry with dryer
- Air conditioning in living and bedroom
- Modern curtains throughout
- Secured parking space and storage cage
- Secure building, intercom and lift access

### View

As advertised or by appointment

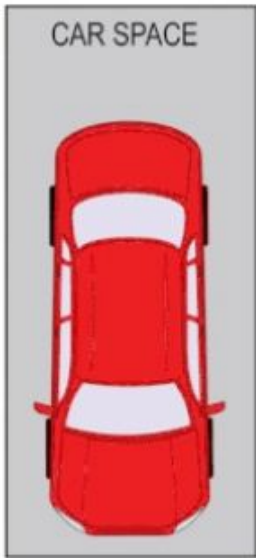
### Agent

**Nevena Tsahtarlis**

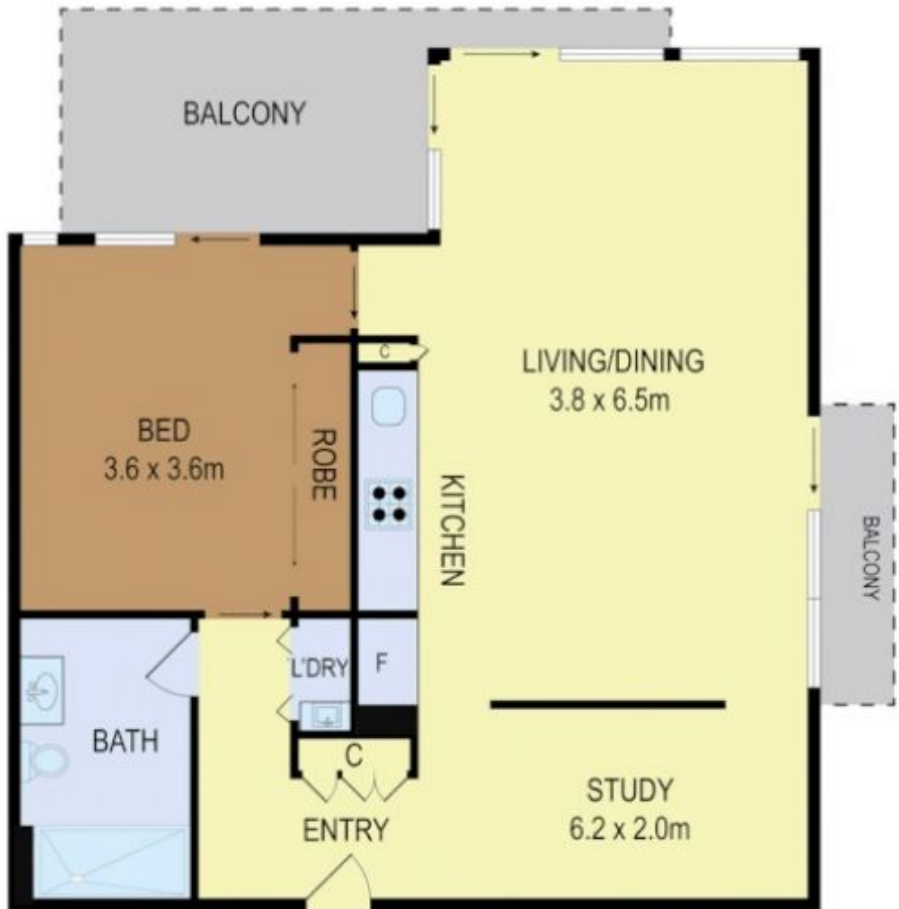
 0428 835 910

 [nevena@morton.com.au](mailto:nevena@morton.com.au)

[morton.com.au](http://morton.com.au)



(NOT IN POSITION)



Disclaimer: Floor plans and site plans are intended as a guide only. They are not part of any legal document or title and are subject to errors, omission, and inaccuracies and should not be used as reference. Sizes and dimensions are approximate only. Interested parties should make their own enquiries.