



**morton.**

**Penrith** 303/81C Lord Sheffield Circuit

 2  2  1

Located in the hub of North Penrith, Thornton offers convenient apartment living in a master planned community only metres from the Penrith rail hub, Westfield shopping centre and local parks.

Located in the Chapman building, this large 100sqm unfurnished two bedroom apartment features a large king-sized master bedroom and balcony.

#### Features

- North facing, covered balcony, double roller blinds throughout
- Entertainers kitchen with stone benchtops, soft close cupboards.
- Four burner gas stove top, stainless steel appliances, dishwasher.
- LED lighting throughout, reverse cycle A/C in living and bedrooms.
- Large open living and dining with engineered timber flooring
- Stylish dark/mountain colour scheme.

**morton.com.au**

#### View

As advertised or by appointment

#### Agent

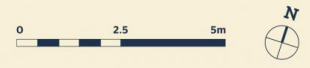
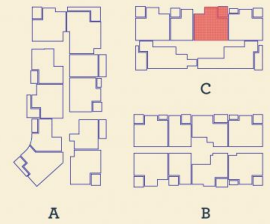
**Georgia Borland**

 0448 430 247

 georgia.borland@morton.com.au

*Apartment*

2 BED- C 203



Internal	77 m <sup>2</sup>
External	8 m <sup>2</sup>
<b>Total</b>	<b>85 m<sup>2</sup></b>

DATE ISSUED 27/07/2015  
VERSION 02

Developed by St Hilliers FIRST POINT PROJECTS | Sales by LINK Home Land Direct [thorntoncentral.com.au](http://thorntoncentral.com.au)

**Disclaimer:** This floor plan has been prepared for marketing purposes only. All descriptions, dimensions, depictions and other details in this floor plan together, the "Information" may not be to scale. The vendor reserves the right to vary or amend the Information without notice. The Information may vary from the actual dimensions, layout and characteristics of the property as built. No third party has any authority whatsoever, either expressly or impliedly, to make or give any representation or warranty or to bind the vendor in connection with the information or the property.

**THORNTON**