



# morton.

**Ermington** 409/24-32 Koorine Street

 2  2  1

Located in the urban hub of Royal Shores, Sirocco offers lifestyle apartment living within the master planned community in Ermington. Perched on the water edge, Sierra offers easy access to the river, cycleway and parks.

- Waterfront building with water view
- Study nook
- Reverse cycle air conditioning
- Quality SMEG stainless steel kitchen appliances
- Gourmet kitchen with stone bench tops & splash back
- LED under cupboard lighting
- Wool blend carpets, efficient LED down lights
- Data/TV points in living and main bedroom
- Timber look tile in living areas & kitchen
- Secure car space & storage cage

### View

As advertised or by appointment

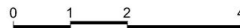
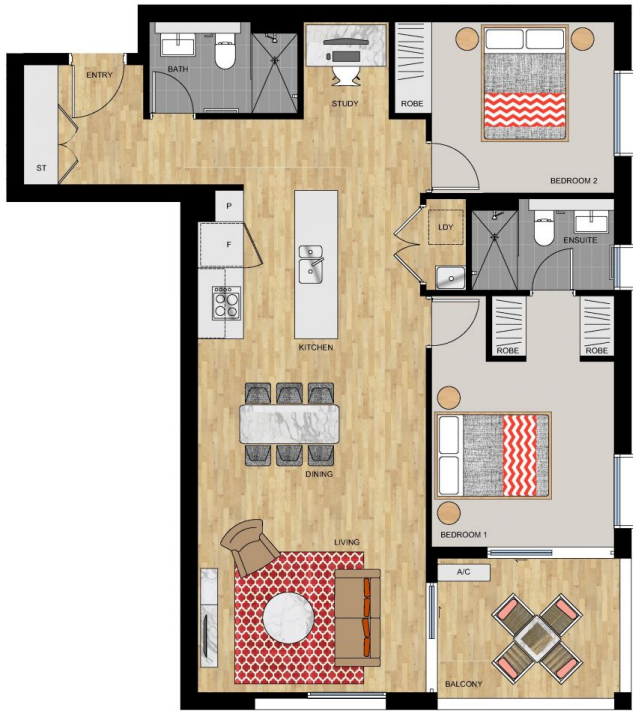
### Agent

**Sarah Fowell**

 0437 492 129

 [rentals@morton.com.au](mailto:rentals@morton.com.au)

[morton.com.au](http://morton.com.au)



JOINTLY DEVELOPED BY



Disclaimer: This floor plan has been prepared for marketing purposes only. All descriptions, dimensions, depictions and other details in this floor plan may not be to scale and may vary from the property as built. Your attention is drawn to the special conditions of the contract for sale of land. No third party has any authority to make or give any representation or warranty in relation to the property unless the representation or warranty is confirmed by the vendors and included in the contract for sale of land. Date Issued: 05/12/14 Revision: C

SALES BY

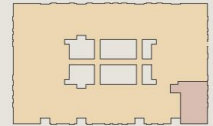


**ROYAL SHORES**  
SYDNEY HARBOUR

**SIROCCO I**  
**APARTMENT 409**  
**LOT 50**

2 BEDROOM

Internal	84 sqm
External	7 sqm
<b>Total</b>	<b>91 sqm</b>



SIROCCO I - LEVEL 4

**ROYAL SHORES DISPLAY CENTRE**  
1 Bundarra Street, Ermington NSW 2115  
P 1300 888 558 W royalshores.com.au