



# morton.

**Waterloo** 603/18-22 Amelia Street

2 2 1

Located in the Waterloo, just 3km from the CBD, the new ORE development is eye-catching design with urban living at its best. Stylish eight level residential building maximises natural light and space for sophisticated living.

- One of the best layouts in the building, corner unit with plenty of natural light
- Generous size open plan living and dining area
- Stainless steel Smeg appliances and gas cook top with Wok burners
- Caesar stone bench top, charcoal glass splashbacks
- Main Bathroom and Ensuite with modern luxurious square lined Bath & Shower
- Wool Carpets and Timber floors with neutral colour tones
- Security Intercom Access
- Ducted air conditioning throughout
- Over-sized balcony great for entertaining
- Secure underground car space and storage cage

## View

As advertised or by appointment

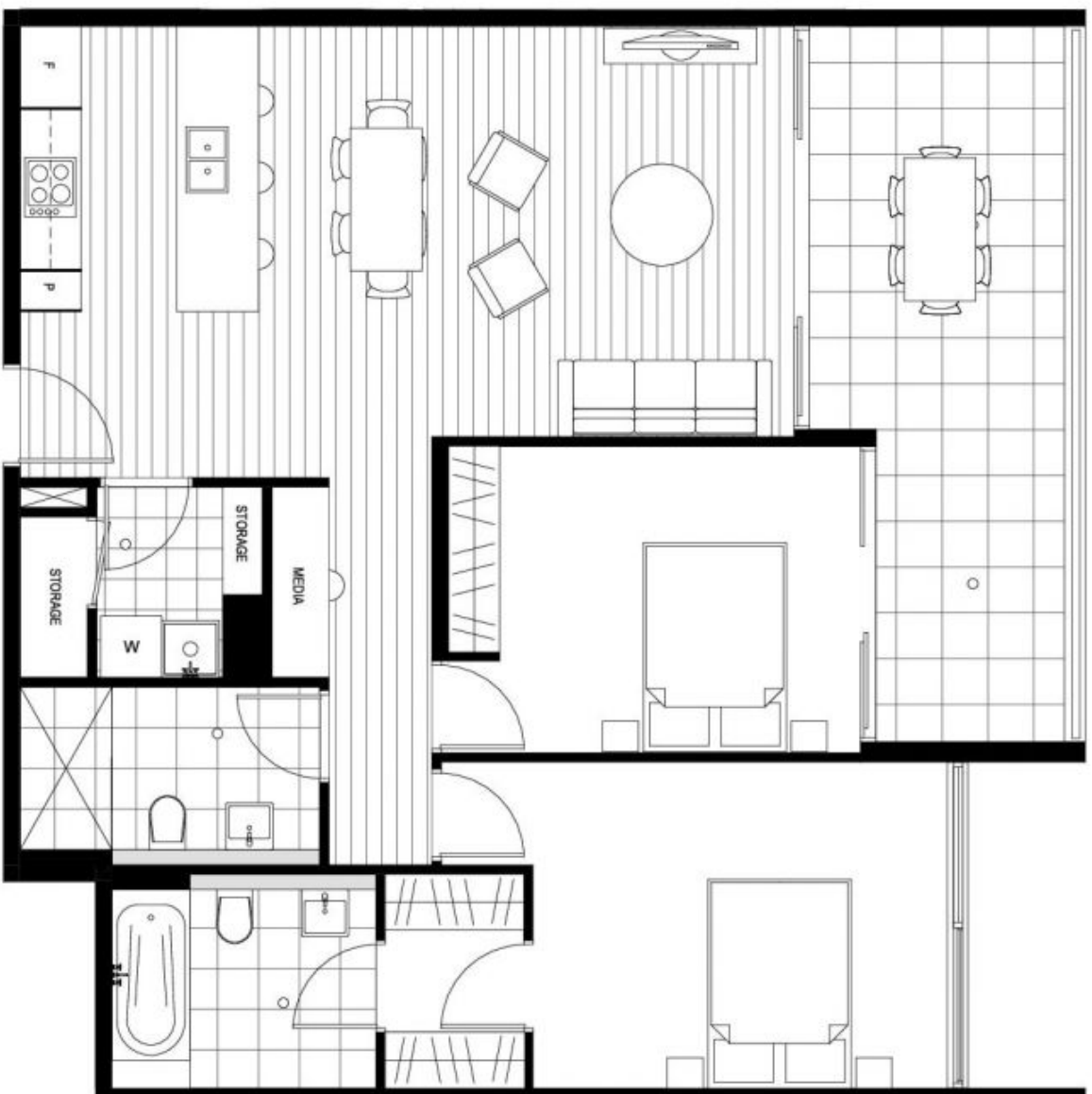
## Agent

**Kristian Karaspyros**

0436 477 102

kristian.karaspyros@morton.com.au

**morton.com.au**



Disclaimer: 1. Please note, this layout plan was produced prior to construction. 2. The information is believed to be correct, but is not guaranteed. 3. Changes may be made during construction and dimensions, areas, fittings, finishes and specification are subject to change without notice in accordance with the provisions of the contract for sale. 4. The furniture and furnishings depicted are not included with any sale and purchasers must refer to the contract for sale for the list of inclusions. 5. The position of the furniture and furnishings should not be taken to be indicative of final position of power points, tv connection points and the like. 6. Prospective purchasers must rely on their own enquiries. 7. All graphics including the layout and ballustrade and the like are indicative only. 8. Ballustrade for services are not depicted. 9. The layout plan is an unperfected scale.



THE HEART OF INNER CITY LIVING.

**APARTMENT**  
**203, 303, 403, 503, 603, 702**  
**LEVEL 2 - 7**  
**2 bedroom**

Internal area 86sqm  
 Balcony area 14sqm  
 Total area 100sqm

9211 9993  
[oreapartments.com.au](http://oreapartments.com.au)

**CPM**  
 REALTY