



morton.

Newington CG01/3 Avenue of Europe Avenue

2 2 1

Stylish, spacious living in Newington doesn't get any better than in this impressively proportioned single-level residence that sits peacefully within the EKO resort development. Offering a fresh and carefree lifestyle with refurbishment, it makes a substantial home of undeniable appeal, and has been well-appointed throughout to offer a thoroughly modern urban home in calm leafy surrounds.

View

As advertised or by appointment

Agent

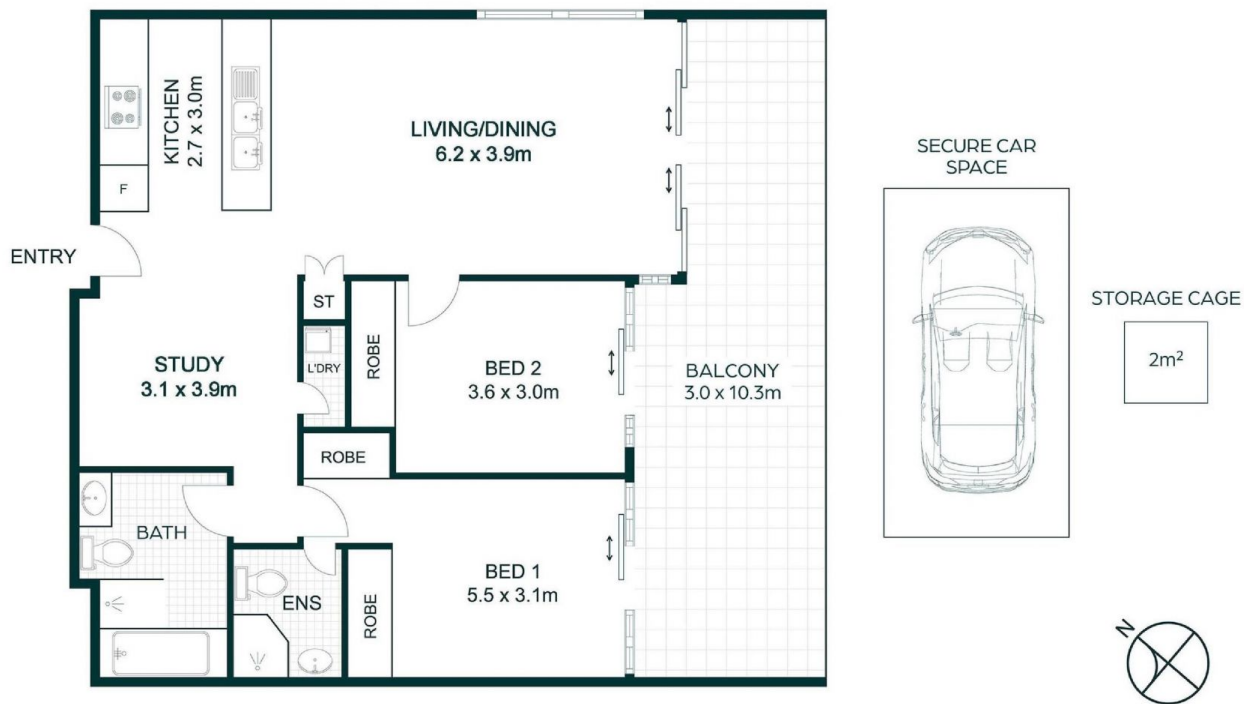
Dylan Choe

0416 932 977

dylanchoe@morton.com.au

- Timber flooring throughout, freshly painted
- A generous living and dining space that flows to the outside area
- Oversized study can be use for any purposes
- Contemporary kitchen with premium appliances and breakfast bar
- The master suite has an ensuite and direct access to the terrace
- A quality modern bathroom plus a separate internal laundry
- Security car space plus a storage cage and level lift access
- Resort facilities include a pool, BBQ area, guest lounge and gym

morton.com.au



CG01/3 Avenue of Europe, Newington



Scale in meters. Plan is indicative only and dimensions are approximates.
 All information contained here is gathered from sources which are believed to be reliable and accurate. Plan provided by Continuous Creative Pty Ltd. We cannot guarantee its accuracy and interested persons should rely on their own enquiries.