



**morton.**

**Penrith** 501/81C Lord Sheffield Circuit

 2  2  1

Thornton Central apartments located on the north side of Penrith train station with park and district views, some with water views towards the picturesque Blue Mountains, situated in the master-planned community Thornton Estate, offering convenient apartment living only metres to Westfield shopping centre, local parks and quality restaurants and cafes.

**View**

As advertised or by appointment

**Agent**

**Georgia Borland**

 0448 430 247

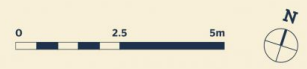
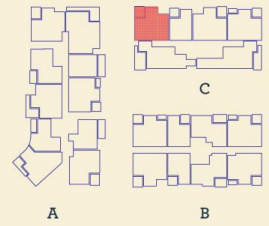
 georgia.borland@morton.com.au

- North facing, covered balcony, study nook
- Timbered open living and dining area, LED lighting throughout
- Reverse cycle air conditioning in living and main bedroom
- Block-out roller blinds throughout
- Eat-in kitchen with stone bench-tops, soft close cupboards
- Four burner stove top with stainless steel appliances
- NBN ready, MATV/PayTV points in living & bedroom
- Quality bathroom with mirrored vanity cabinet
- Large internal laundry with dryer
- Wool-blend carpeted bedrooms with mirrored built-in robes
- Audio intercom with security and lift access

**morton.com.au**

*Apartment*

2 BED - C 501



Internal	76 m <sup>2</sup>
External	8 m <sup>2</sup>
<b>Total</b>	<b>84 m<sup>2</sup></b>

DATE ISSUED 27/07/2015  
VERSION 02

Developed by St Hilliers FIRST POINT PROJECTS | Sales by LINK Home Land Direct [thorntoncentral.com.au](http://thorntoncentral.com.au)

**Disclaimer:** This floor plan has been prepared for marketing purposes only. All descriptions, dimensions, depictions and other details in this floor plan together, the "Information" may not be to scale. The vendor reserves the right to vary or amend the Information without notice. The Information may vary from the actual dimensions, layout and characteristics of the property as built. No third party has any authority whatsoever, either expressly or impliedly, to make or give any representation or warranty or to bind the vendor in connection with the information or the property.

**THORNTON**