



morton.

Mosman 2.02/116 Belmont Road

 1  1  1

Designed by award winning architects Bates Smart with elegant exterior finishes, each floor plan has been individually designed to maximise the intrinsic value of its position. Natural palettes in soft and rich tones are created by the quality choices sourced for this space.

- Well-proportioned light-filled living area
- Elegant kitchen with premium Miele appliances and gas cooking
- Calcutta marble counter tops and splashback
- Wide oak timber floors in living area
- Split system air-conditioning
- Good size balcony with glass aluminium louvres
- Leafy outlook and acoustic windows
- Secure car space and separate storage

Monarch development is literally steps from an endless choice of the lower north shore's finest cafes, restaurants, boutique shops, major retail brands, schools, pharmacies and medical services. Its unbeatable-lifestyle location is only moments

morton.com.au

View

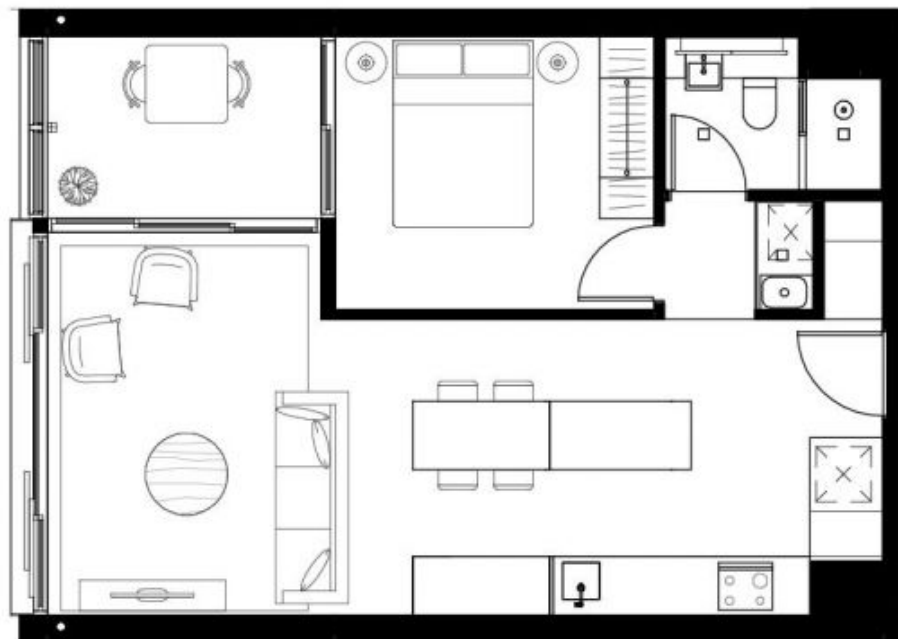
As advertised or by appointment

Agent

Joseph Youll

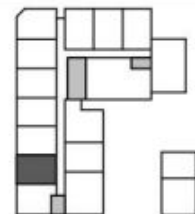
 0410 593 248

 joseph.youll@morton.com.au



APARTMENT 2.02
LEVEL Level 02
TYPE 1BT02
UNIT AREA (sqm)
 Internal 50 m²
 Balcony 6 m²
 Total 56 m²
Sheet Number A50.202 **Revision [R]**

Legend:
 S- Storage



DISCLAIMER: Please note that the layout plan was produced prior to construction. The information is believed to be correct but is not guaranteed. Changes may be made during construction and dimensions, areas, fittings, finishes and specification are subject to change without notice in accordance with the provisions of the contract for sale. The furniture and furnishings depicted are not included with any sale and purchasers must refer to their contract for sale for the list of inclusions. The position of the furniture and furnishings should not be taken to be indicative of final positions of power points, tv connection points and the like. Prospective purchasers must rely on their own enquiries. All graphics including tile layout and balustrades and the like are indicative only. Bulkheads for services are not depicted.