



# morton.

**Wentworth Point** 612/8 Baywater Drive

1 1 1

Located in Messina at The Waterfront, here is your opportunity to move into this sunny one bedroom apartment. A short stroll to The Piazza, local restaurants, convenience store, pharmacy, public transport off Hill Road and ferry service to Parramatta and City CBD. The Waterfront is located moments to Sydney Olympic Park main venues and train station, Bicentennial Park and Millennium Parklands.

- Excellent natural light and air flow
- Split system air conditioning
- Generous size lounge room flowing onto balcony
- Good size bedroom with built-in wardrobe
- Separate laundry room and clothes dryer
- Modern contemporary finishes
- Stone bench tops and stainless steel appliances
- Large bathroom
- Secure basement car space

## View

As advertised or by appointment

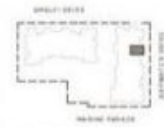
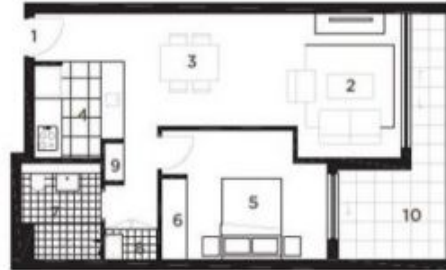
## Agent

**Sarah Fowell**

0437 492 129

rentals@morton.com.au

**morton.com.au**



LOCATION

### UNIT 612 1 BED ROOM

INTERNAL	54 sqm
BALCONY	10 sqm
TOTAL AREA	64 sqm

#### KEY:

- 1 Entry
- 2 Living
- 3 Dining
- 4 Kitchen
- 5 Bedroom
- 6 Wardrobe
- 7 Bathroom
- 8 Laundry
- 9 Store
- 10 Balcony

28.10.2010  
REV. D



Disclaimer: This plan is an illustration only and does not constitute an offer of any property. It is intended to provide a general overview of the proposed development and is not to be relied upon for any specific details. The actual design and construction of the development may vary from the illustration. The developer reserves the right to amend the plan without notice. The plan is provided for information only and does not constitute an offer of any property.

