



# morton.

**Marsden Park** 2D Cassinia Avenue

🛏 3 🚿 2 🚗 2

This home is situated in the sought-after location of Marsden Park. Within close proximity to Sydney Business Park, Costco, Ikea, Bunnings, Schools, parks and sporting fields. Conveniently located with easy access to the M7, via Richmond Road, and beyond connections to the M2 and M4 which will make it easy to travel to nearby facilities and services.

- Generous tiled open living/dining
- Gourmet kitchen with quality stainless steel appliances
- Family size bedrooms all with built in robes
- Master bedroom features an ensuite
- Internal laundry
- Low maintained yard with alfresco entertaining area
- Double garage with auto doors
- Ducted air conditioning

### View

As advertised or by appointment

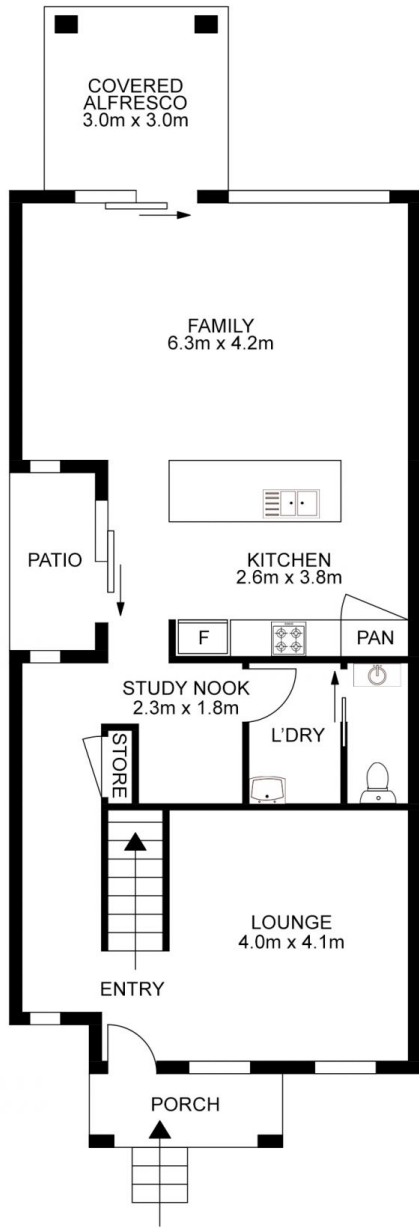
### Agent

**Sarah Fowell**

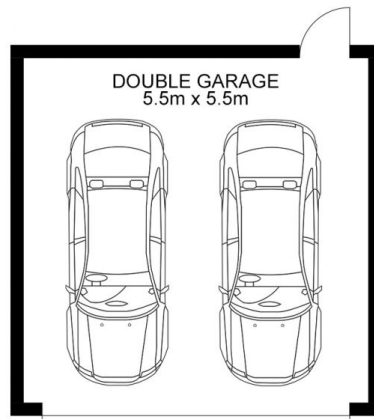
📞 0437 492 129

✉ rentals@morton.com.au

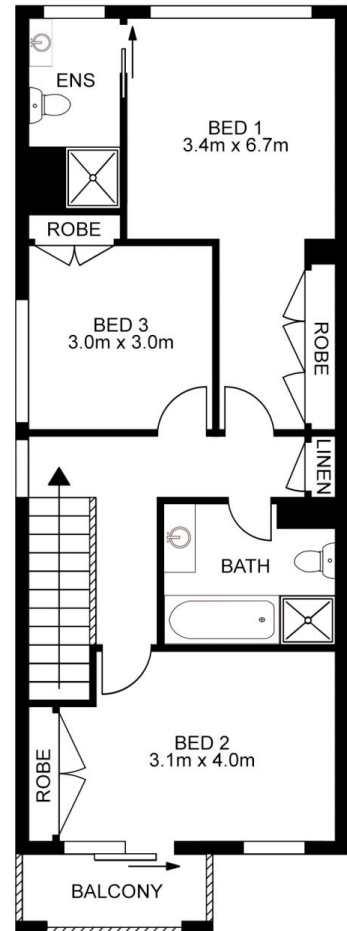
[morton.com.au](http://morton.com.au)



GROUND FLOOR



DOUBLE GARAGE



FIRST FLOOR

All information contained herein is gathered from all sources we believe to be reliable. However we cannot guarantee its accuracy and interested parties should rely on their own enquiries.

