



morton.

Jordan Springs 52 Wildflower Circle

6 3 2

Set in the highly sought after suburb of Jordan Springs is this corner block two-storey, stylish 6-bedroom modern, contemporary home, set on 522 sqm of land, perfect for families looking to upsize and enjoy a lifestyle of convenience.

- Built by Meridian Homes in 2015 with digital door entrance lock
- Open plan living and dining with polished bamboo floorboards throughout
- Ducted air con throughout, plantation shutters and solar panels
- Covered alfresco BBQ area, child-friendly yard with level lawns
- Luxurious over-sized master bedroom with built-in robes, ensuite and large balcony
- Five bedrooms upstairs, one set up as a theatre room
- Downstairs guest bedroom/home office with dual access bathroom
- Main bathroom has separate bath and shower, large internal laundry

morton.com.au

View

As advertised or by appointment

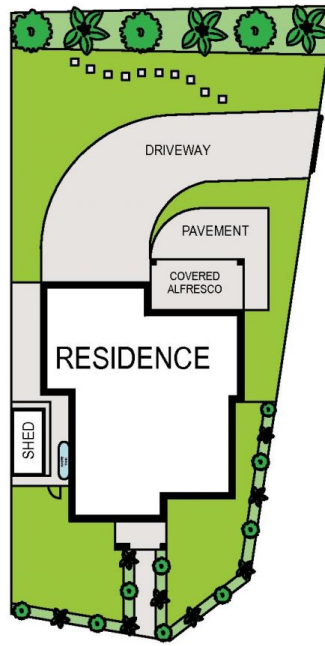
Agents

David Lipman

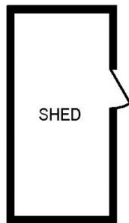
0409 663 535
 david@morton.com.au

Jamie Bae

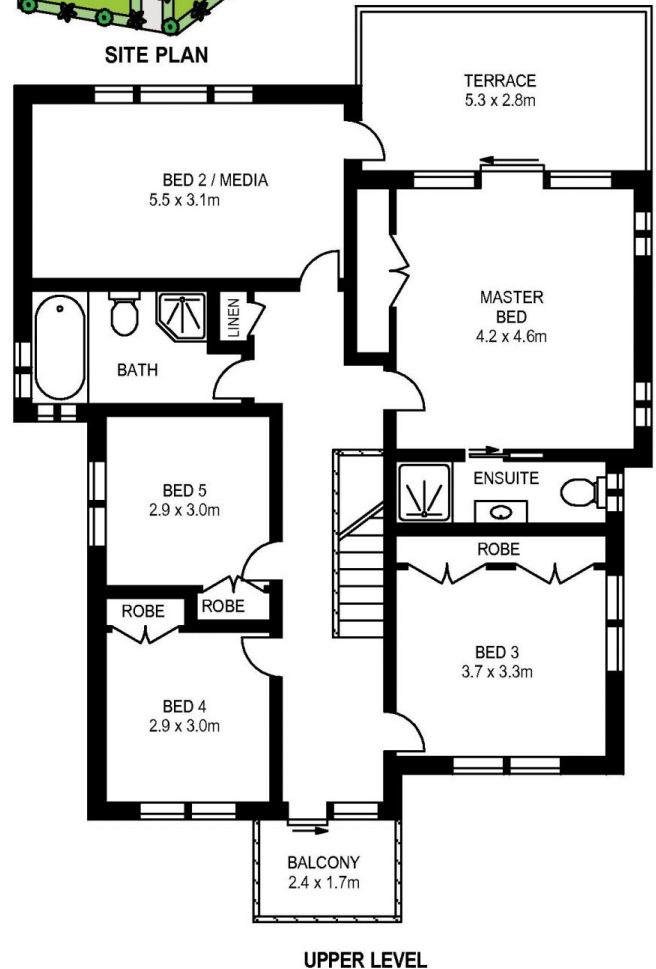
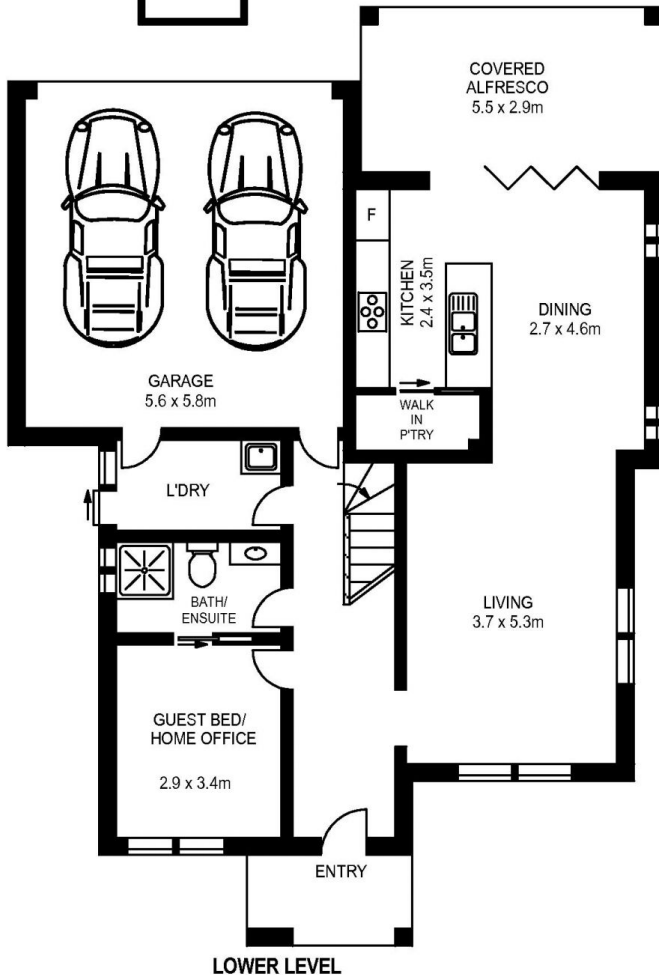
0409 968 604
 jamie.bae@morton.com.au



SITE PLAN



SHED



BUILDING AREA: APPROX. 298m²
LAND SIZE: APPROX. 522m²

52 WILDFLOWER CIRCLE, JORDAN SPRINGS



www.assetphotographers.com.au

Please note these measurements are approximate only. The plans is intended as a rough guide for illustrative purpose. It is not warranted or guaranteed to be correct nor it is part of the sale or rental contract