



# morton.

**Penrith** E627/1-39 Lord Sheffield Circuit

 2  2  1

For those on the lookout for a superb lifestyle and location package, this well-proportioned security apartment offers a great urban home. Smartly designed to give it a fresh modern feel, featuring a bright and low-maintenance layout. All this and a top location in Thornton Estate's sought-after Harts Landing building that is literally footsteps to the heart of Penrith.



- Ideally located on level 6, with a pleasant north easterly view of the mountains
- Split system air con in the living room, timber-look porcelain tiles in living
- Separate living and dining areas plus good-sized balcony off the living area
- Carpet to both bedrooms and walk in robe and ensuite to the master
- Large island bench in kitchen with Omega appliances including dishwasher
- NBN ready, Data/TV/PayTV points in the living & bedroom
- Secure car space and storage cage in the basement, lift

### View



As advertised or by appointment

### Agents

#### David Lipman

 0409 663 535  
 david@morton.com.au

#### SJ Singh

 0417 085 519  
 sj.singh@morton.com.au

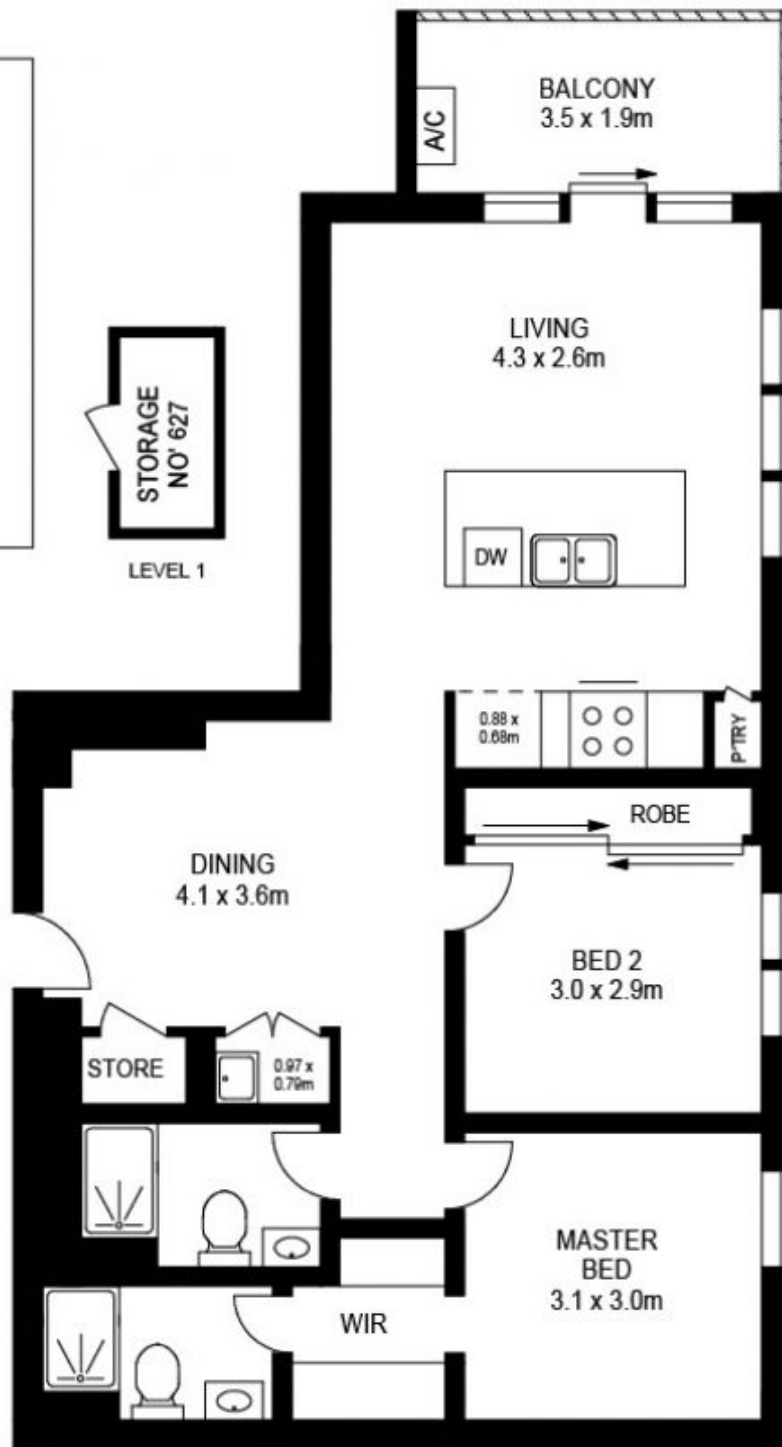
[morton.com.au](https://morton.com.au)



BASEMENT



LEVEL 1



LEVEL SIX

APPROX. INT. AREA : 73 m<sup>2</sup>

APPROX. EXT. AREA : 7 m<sup>2</sup>

TOTAL AREA INCLUDING CAR SPACE AND STORAGE : 96 m<sup>2</sup>

**E627/1-39 LORD SHEFFIELD CIRCUIT, PENRITH**



www.assetphotographers.com.au

Please note these measurements are approximate only. The plans is intended as a rough guide for illustrative purpose. It is not warranted or guaranteed to be correct nor it is part of the sale or rental contract