



morton.

Wentworth Point 144/5 Baywater Drive



Located in Palermo at The Waterfront, is your opportunity to move into this very neat one bedroom apartment. A short stroll to The Piazza, local restaurants, convenience store, pharmacy, public transport off Hill Road and ferry service to Parramatta and City CBD. The Waterfront is located moments to Sydney Olympic Park main venues and train station, Bicentennial Park and Millennium Parklands.

- Split level unit with a courtyard
- Complex pool and gym
- Combined living and dining area
- Split system air conditioning
- Generous size bedroom with built in
- Spacious modern kitchen with quality appliances
- Separate internal laundry with dryer
- Secure building with lift access and a single secure car space + storage

View

As advertised or by appointment

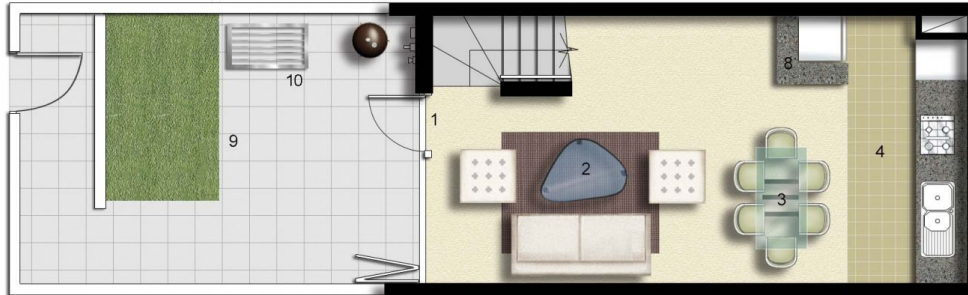
Agent

Sarah Fowell

📞 0437 492 129

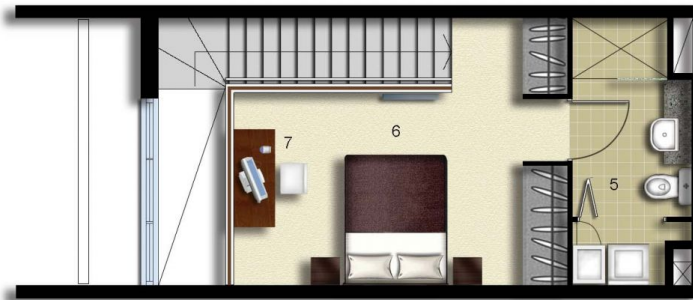
✉️ rentals@morton.com.au

morton.com.au

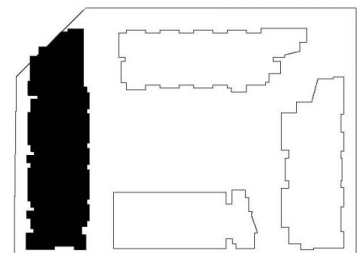


- ENTRY 1
- LIVING 2
- DINING 3
- KITCHEN 4
- ENSUITE/LAUNDRY 5
- BEDROOM 6
- STUDY 7
- STORAGE 8
- TERRACE 9
- CLOTHES DRYING 10

LEVEL 01



LEVEL 02



PALERMO

UNIT: **144**

TYPE: **1 Bedroom**

UNIT AREA: **60.0 sqm**

OUTDOOR AREA: **24.0 sqm**



Disclaimer: All layouts are indicative only, and subject to change.



0 2.5 5M