



morton.

Potts Point 133 Victoria Street

🛏 3 🚗 2 🚗 1

Ready to experience the epitome of Sydney living. This exquisite 3-bedroom terrace house in Potts Point offers the perfect blend of modern luxury, historic charm, and breathtaking views of the iconic Sydney Harbour Bridge.

- Lounge/dining with high ceilings and new polished timber floors
- Enjoy ample space and privacy with three well-appointed bedrooms
- Each bedroom offering comfort and space
- Wake up to the captivating sight of the Sydney Harbour Bridge from your own private terrace
- Master bedroom occupies private 3rd level with ensuite & walk-in robe
- Outdoor terrace balconies throughout the home
- Modern fully equipped kitchen, complete with high-end appliances
- Air conditioning on each level
- Excellent storage & security
- Secure parking for your peace of mind

View

As advertised or by appointment

Agents

Emma Ryan

📞 0409 325 440
✉ emma.ryan@morton.com.au

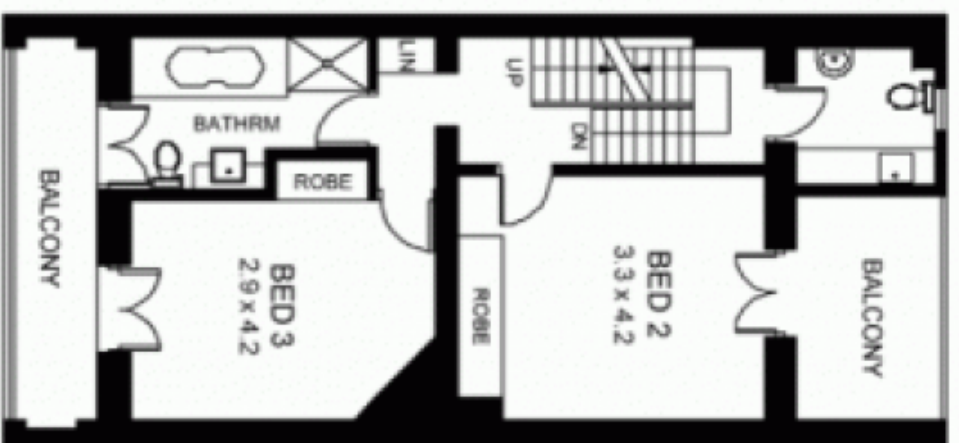
Devak Arutla

📞 0458 788 790
✉ devak.arutla@morton.com.au

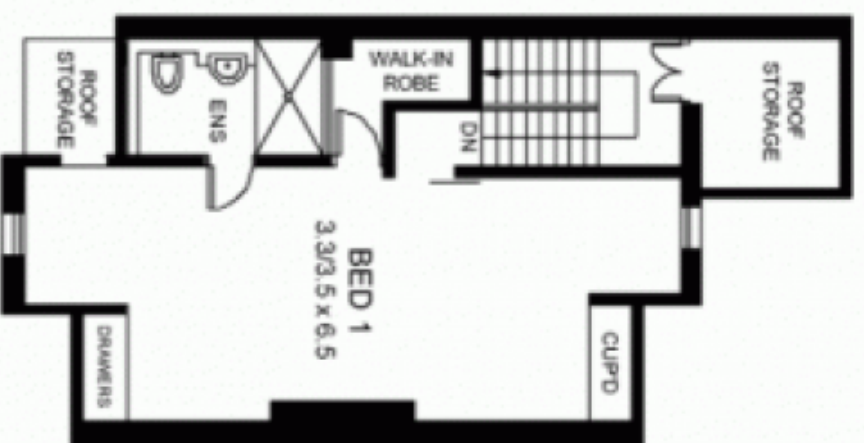
morton.com.au



GROUND FLOOR



FIRST FLOOR



SECOND FLOOR

PLANS ARE ONLY INDICATIVE OF LAYOUT. DIMENSIONS ARE APPROXIMATE. PREPARED BY GLEBEWAL PTY LTD 0412 803 888



133 VICTORIA STREET

POTTS POINT